

MEMORANDUM

**TO: RIVANNA WATER & SEWER AUTHORITY
BOARD OF DIRECTORS**

**FROM: ROBERT C. WICHSER
DIRECTOR WATER & WASTEWATER**

**REVIEWED BY: THOMAS L. FREDERICK
EXECUTIVE DIRECTOR**

SUBJECT: OPERATIONS REPORT FOR JANUARY 2010

DATE: FEBRUARY 23, 2010

WATER OPERATIONS:

Average daily/monthly total water send-out for the month of January 2010 is as follows:

<i>Water Purification Plant</i>	<i>MGD/MG for Month</i>
Observatory	1.9 / 59.8
South Rivanna	6.1 / 189.9
North Rivanna	0.35 / 9.6
<i>Urban Total</i>	8.3 / 259.3
Crozet	0.41 / 12.8
Scottsville	0.09 / 2.9

- All RWSA water production facilities remained in 100% compliance with the Safe Drinking Water Act during the month of January.

Status of Reservoirs (As of Feb.12th) - Urban reservoirs at 99.8% usable capacity:

- Ragged Mountain Reservoir is full.
- Beaver Creek Reservoir is full.
- Sugar Hollow Reservoir is down -0.2 feet. A log is lying across the Sugar Hollow Dam Bladder causing a drop in the level. We have evaluated removal of the log and based on concern related to personnel safety, we will be waiting until ice on the reservoir clears in the immediate work area before we attempt removal.

- Totier Creek Reservoir is full.
- South Rivanna Reservoir is full.

WASTEWATER OPERATIONS:

Performance of the WWTPs was as follows for January 2010 versus respective permit limits:

<i>WWTP</i>	<i>AVE. DAILY FLOW (MGD)</i>	<i>AVE. BOD (ppm)</i>	<i>PERMIT (ppm)</i>	<i>AVE. TSS (ppm)</i>	<i>PERMIT (ppm)</i>
Moores Creek	11.3	<QL	11	6	22
Camelot	0.102	7	30	12	30
Glenmore	0.154	3	15	4	30
Scottsville	0.103	NR	30	NR	30
Stone Rob	0.002	NR	30	NR	30

NR- Not Required

<QL: Less than analytical method quantitative level

- All RWSA wastewater facilities were in regulatory compliance with their effluent concentration limits during the month of January.
- There were no odor complaints related to Crozet Pump Station No. 1 during this current reporting period.
- There were no odor complaints related to the Moores Creek WWTP facility during this current reporting period.

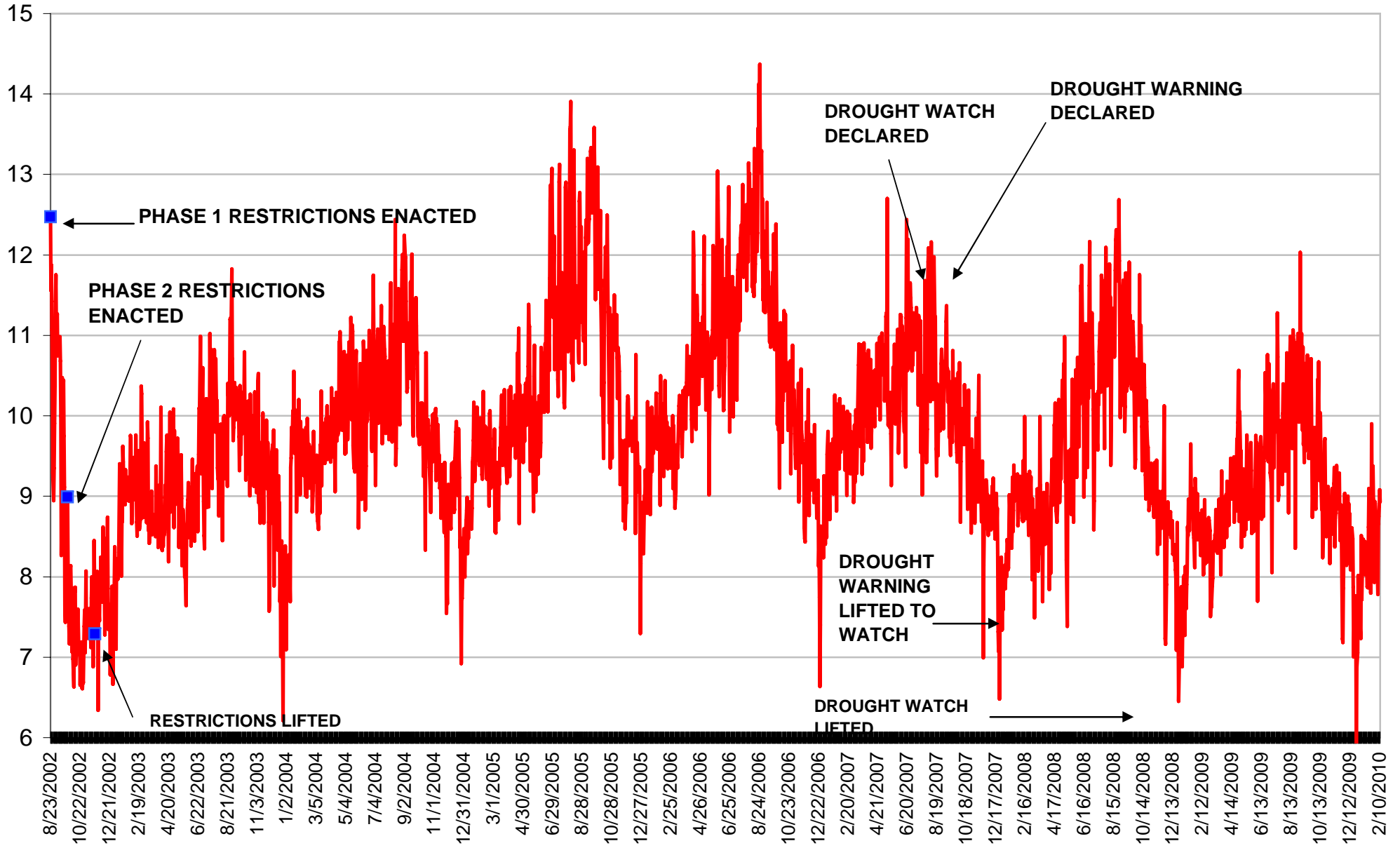
Additionally, the attached graphs are for your review and information. If you have any additional questions, please do not hesitate in contacting me at: 977-2970, Ext: 155.

cc: D. Golladay
C. Lang

Attachments

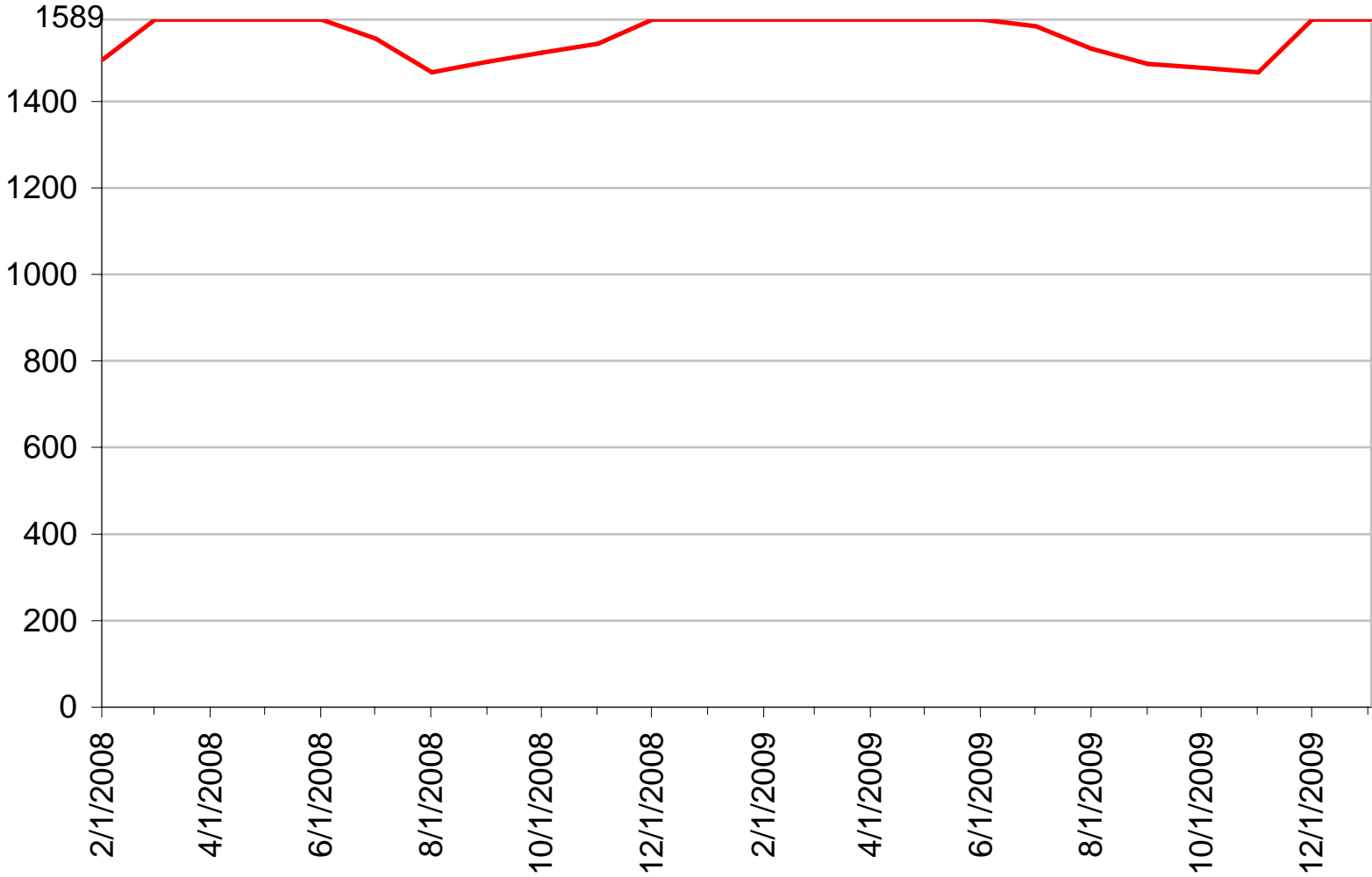
Daily Water Consumption

Million Gallons



Urban Raw Water Storage*

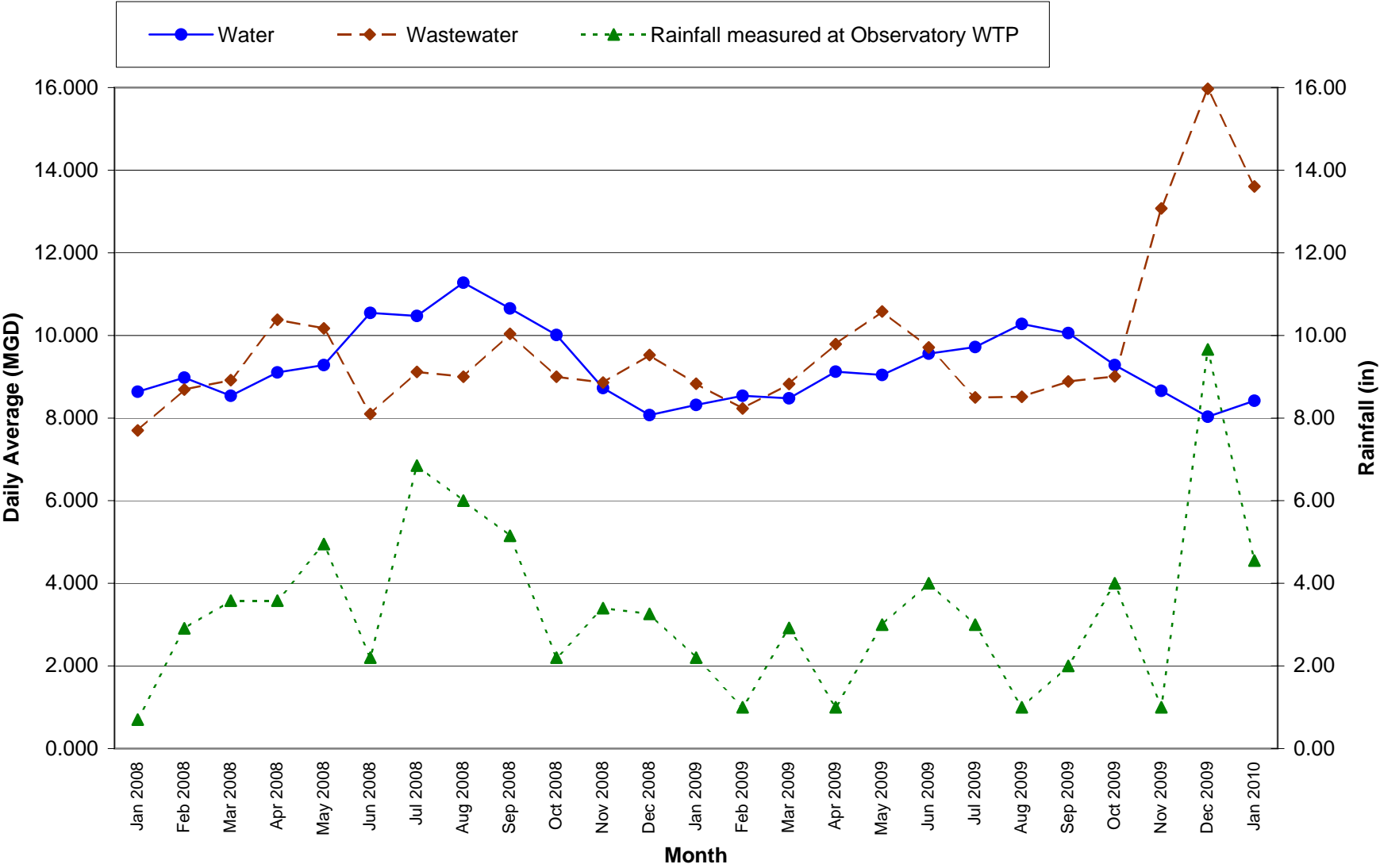
Million Gallons



* Includes the South Fork Rivanna, Sugar Hollow, and Ragged Mtn Reservoirs.

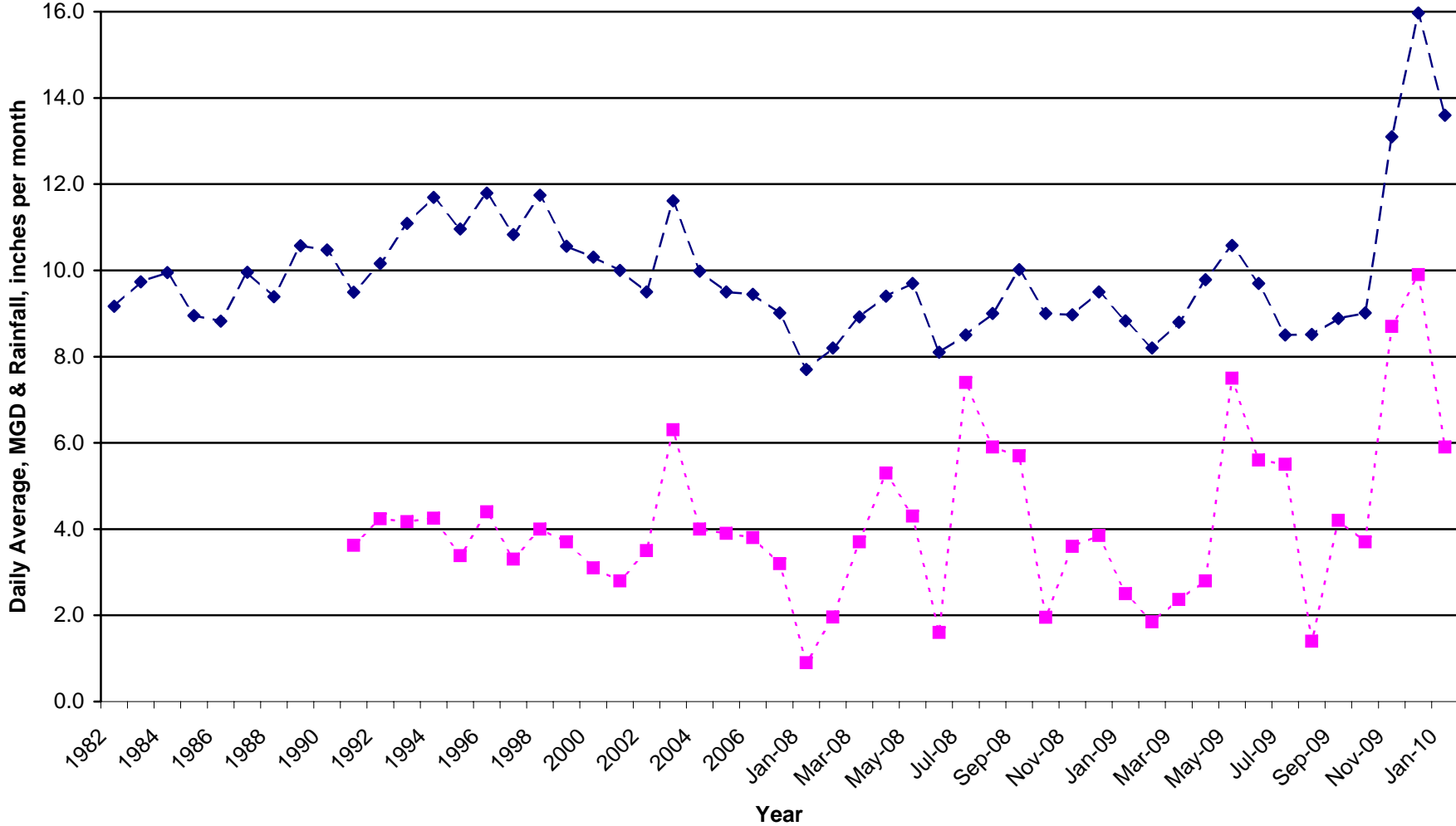
Date

Urban Monthly Production

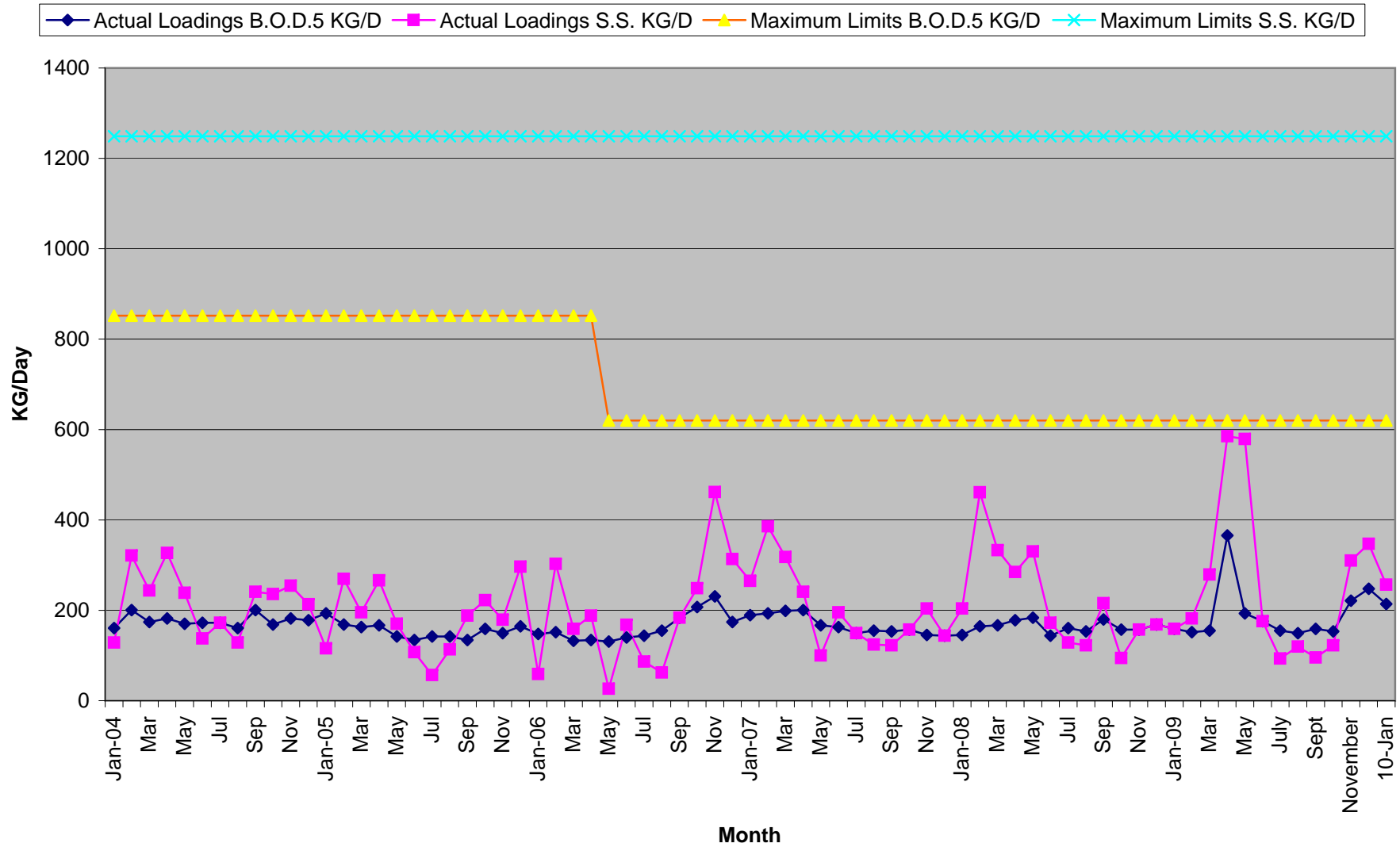


UWW Annual Flows & Rainfall Data

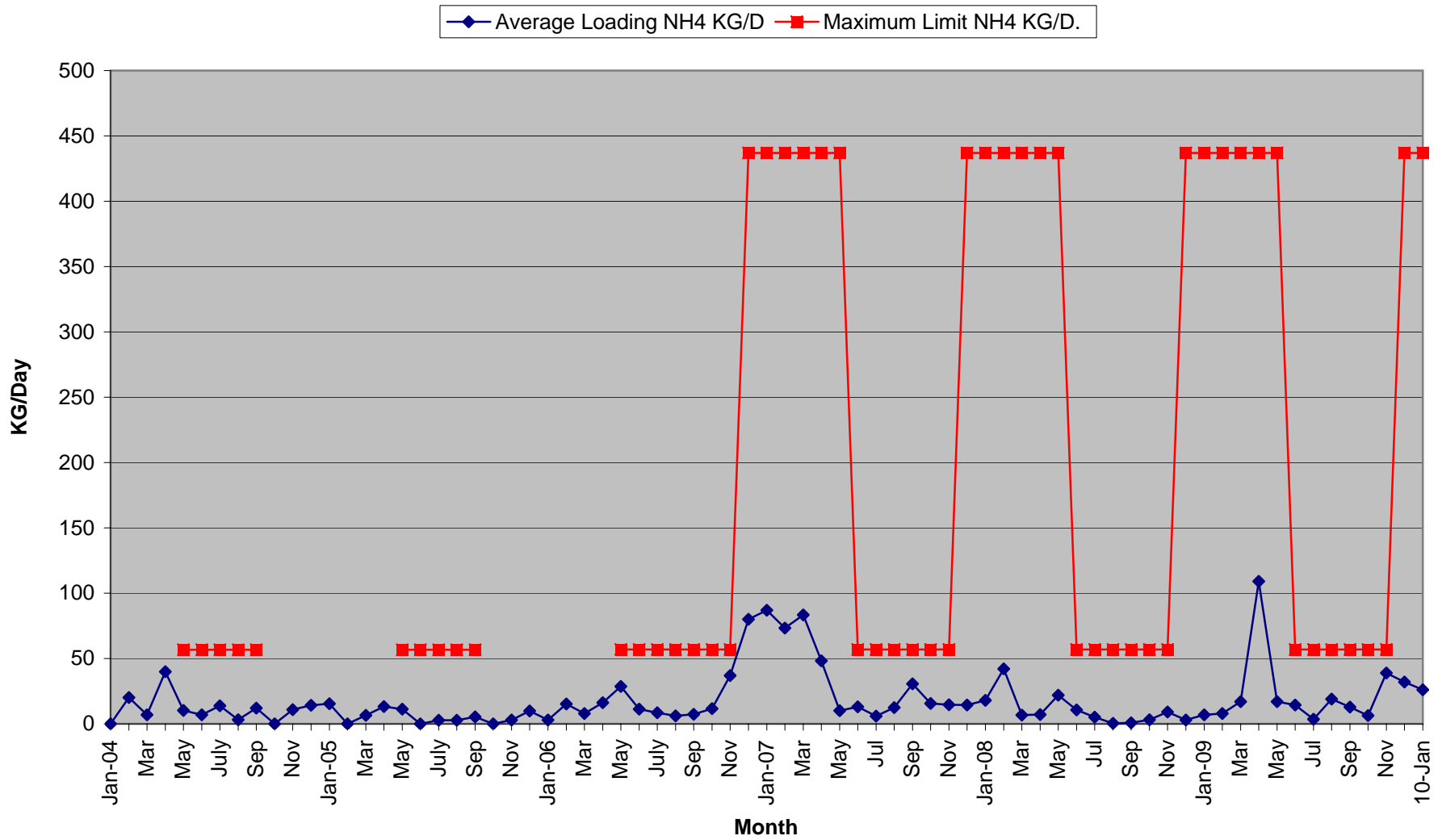
—◆— MGD
 - -■- - Rainfall, Average inches per Month measured at Moores Creek WWTP



Moores Creek AWT Plant To Receiving Stream



Moore's Creek AWT Plant To Receiving Stream



Note: NH₄ limits shown reflect changes from the renewal of the facility's VPDES Permit on May 1, 2006.