

MEMORANDUM

**TO: RIVANNA WATER & SEWER AUTHORITY
BOARD OF DIRECTORS**

**FROM: LONNIE WOOD, DIRECTOR OF FINANCE AND
ADMINISTRATION**

REVIEWED BY: THOMAS L. FREDERICK, EXECUTIVE DIRECTOR

SUBJECT: FEBRUARY MONTHLY FINANCIAL SUMMARY – FY 2010

DATE: MARCH 23, 2010

Urban Water demand is 3% below budgeted flow while the Urban Wastewater flows are 27% above the straight-line budget estimates through February. In the financial summary four months ago, Urban Wastewater revenues were 10% below straight-line budget estimates. The dramatic turnaround represents very high wastewater flows associated with wet weather over the past four months. Urban Wastewater revenues exceed projections while operating expenses are 6% below budget, providing for what is now a substantial year to date surplus.

	Urban Water	Urban Wastewater	Total Rural Rate Centers	Total Authority
Operations				
Revenue	\$ 2,768,010	\$ 4,574,297	\$ 848,899	\$ 8,191,206
Expenses	(2,624,694)	(3,423,044)	(828,430)	(6,876,168)
Surplus (deficit)	<u>\$ 143,316</u>	<u>\$ 1,151,253</u>	<u>\$ 20,469</u>	<u>\$ 1,315,038</u>
Debt Service				
Revenue	\$ 3,710,582	\$ 3,688,465	\$ 238,003	\$ 7,637,050
Expenses	(3,849,095)	(2,928,664)	(233,778)	(7,011,537)
Surplus (deficit)	<u>\$ (138,513)</u>	<u>\$ 759,801</u>	<u>\$ 4,225</u>	<u>\$ 625,513</u>
Total				
Revenue	\$ 6,478,592	\$ 8,262,762	\$ 1,086,902	\$ 15,828,256
Expenses	(6,473,789)	(6,351,708)	(1,062,208)	(13,887,705)
Surplus (deficit)	<u>\$ 4,803</u>	<u>\$ 1,911,054</u>	<u>\$ 24,694</u>	<u>\$ 1,940,551</u>

Notable items: (page numbers refer to attachment)

Note A: Professional Services (Urban Water & Urban Wastewater) pages 2 & 5 - there were some legal expenses paid specific to Urban Water issues that were not budgeted. Most of the costs are for the Woodbriar Neighborhood Property boundary, the Dredging Feasibility Study, and storm sewer overflows.

Note B: Other Services and Charges (Crozet Water & Scottsville Water) pages 3 & 4 - expenses are higher than a straight-line YTD projection due to paying the annual

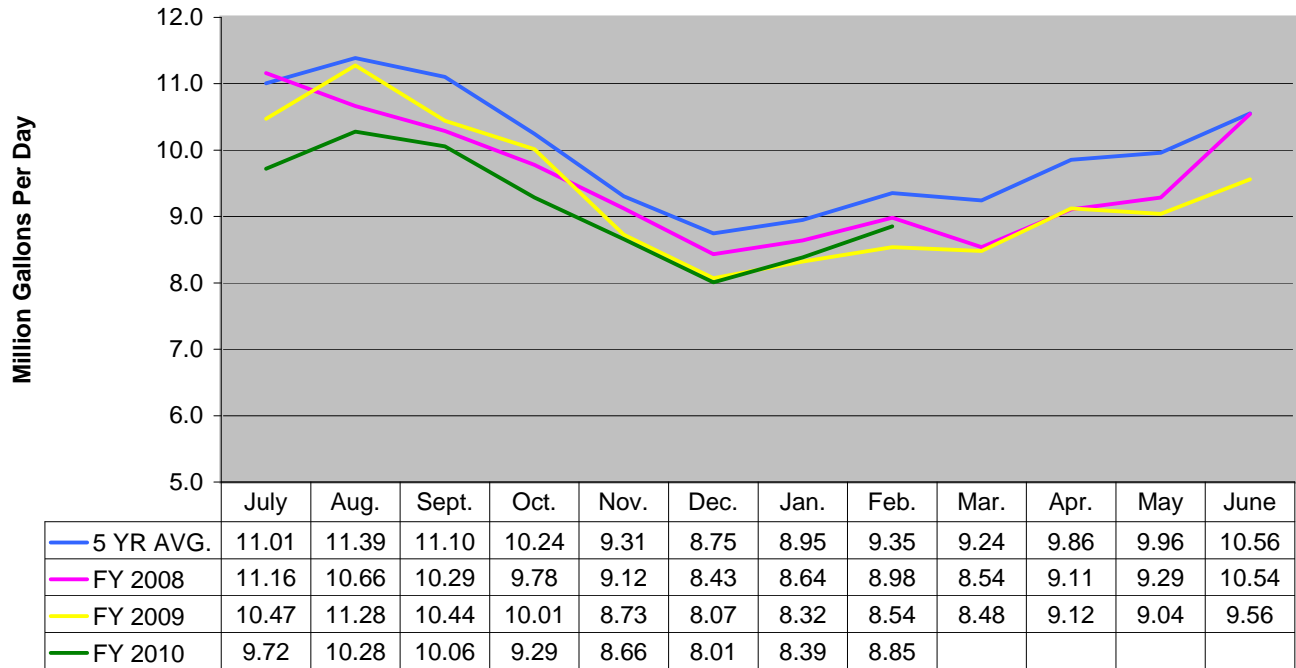
property and liability insurance premium of \$144,800 in July. The straight-line budget through January is \$89,200 and the annual payment made in July was \$144,800. In addition, Rivanna paid the Water Research Foundation \$75,000 in October to help fund their Distribution System Water Control Demonstration project as approved by the Board at the July meeting. This expense was charged 50/50 to the Urban Water and Scottsville Water rate centers and is another reason for higher expenses in this category.

- Note C: Communications (consolidated and Urban Water) pages 1 and 2 – Expenses for purchasing new radios (recommended through review of Emergency Response Planning) were not budgeted for and are causing many of the communication expenses to be over budget in the individual rate center financial reports.
- Note D: Information Technology (Urban Water) – Computer software “Cimlicity” upgrades were purchased in October at a cost of \$13,600, most of which was charged to the Urban Water rate center. This was not a budgeted expense and was related to changing our license agreements in a way that the long term savings for support would make this expenditure well worth the out of budget spending.
- Note E: Operations & Maintenance (Crozet Water) page 3 – The carbon feed system had to be overhauled and the expenses to repair have exceeded expectations.
- Note F: Operations & Maintenance (Urban Water) page 2 – Chemical costs, which are part of this line item, are down this year due to the wet weather. More rain than normal causes the water quality to be better requiring less use of chemicals during the treatment process. A better supplier for activated carbon has also realized a one time savings in the reduction of inventory for this “chemical”. Year end projected costs for this item is \$380,000 to \$400,000, or a savings over budget of \$100,000.
- Note G: Operations & Maintenance (Urban Wastewater) page 5 – The Meadow Creek pipeline repairs in November are the primary reason for Urban Wastewater’s higher costs in this category.

Attachments

**Rivanna Water and Sewer Authority
Flow Graphs**

Urban Water Flows



Urban Wastewater Flows



Rivanna Water & Sewer Authority
 Monthly Financial Statements - February 2010
 Fiscal Year 2010

Consolidated
Revenues and Expenses Summary

<i>Budget</i>	<i>Budget</i>	<i>Actual</i>	<i>Budget</i>	<i>Variance</i>
<i>FY 2010</i>	<i>Year-to-Date</i>	<i>Year-to-Date</i>	<i>vs. Actual</i>	<i>Percentage</i>

Operational Budget vs. Actual

Notes

Revenues

Operations Rate Revenue	\$ 10,642,357	\$ 7,094,905	\$ 7,945,060	\$ 850,156	11.98%
Lease Revenue	60,100	40,067	40,725	658	1.64%
Administration Revenue	419,000	279,333	280,089	756	0.27%
Other Revenues	316,467	210,978	199,293	(11,685)	-5.54%
Interest Allocation	10,100	6,733	6,128	(605)	-8.99%
Total Operational Revenues	\$ 11,448,024	\$ 7,632,016	\$ 8,471,295	\$ 839,279	11.00%

Expenses

Personnel Cost	\$ 5,490,822	\$ 3,606,436	\$ 3,526,485	\$ 79,951	2.22%
Professional Services	201,500	134,333	133,486	848	0.63%
Other Services & Charges	2,255,300	1,503,533	1,357,009	146,524	9.75%
Communications	80,770	53,847	67,092	(13,245)	-24.60%
Information Technology	108,860	72,573	50,061	22,513	31.02%
Supplies	51,300	34,200	25,129	9,071	26.52%
Operations & Maintenance	2,254,698	1,503,132	1,373,036	130,096	8.65%
Equipment Purchases	277,775	185,183	139,293	45,891	24.78%
Depreciation	727,000	484,667	484,667	(0)	0.00%
Reserve Transfers	-	-	-	-	
Total Operational Expenses	\$ 11,448,025	\$ 7,577,904	\$ 7,156,257	\$ 421,647	5.56%
Operational Surplus/(Deficit)	\$ (1)	\$ 54,112	\$ 1,315,038		

Debt Service Budget vs. Actual

Revenues

Debt Service Rate Revenue	\$ 10,269,681	\$ 6,846,454	\$ 7,486,610	\$ 640,156	9.35%
Buck Mountain Surcharge	120,300	80,200	36,300	(43,900)	-54.74%
Buck Mountain Lease Revenue	12,200	8,133	7,299	(834)	-10.26%
Trust Fund Interest	66,600	44,400	67,720	23,320	52.52%
Reserve Fund Interest	90,000	60,000	39,122	(20,878)	-34.80%
Total Debt Service Revenues	\$ 10,558,781	\$ 7,039,187	\$ 7,637,050	\$ 597,863	8.49%

Debt Service Costs

Total Principal & Interest	\$ 5,592,641	\$ 3,728,427	\$ 3,739,314	\$ (10,887)	-0.29%
Reserve Additions-Interest	115,000	76,667	39,122	37,545	48.97%
Reserve Additions-CIP Growth	4,849,653	3,233,102	3,233,102	-	0.00%
Total Debt Service Costs	\$ 10,557,294	\$ 7,038,196	\$ 7,011,538	\$ 26,658	0.38%
Debt Service Surplus/(Deficit)	\$ 1,487	\$ 991	\$ 625,513		

Summary

Total Revenues	\$ 22,006,805	\$ 14,671,203	\$ 16,108,346	\$ 1,437,142	9.80%
Total Expenses	22,005,319	14,616,100	14,167,795	448,305	3.07%
Surplus/(Deficit)	\$ 1,486	\$ 55,103	\$ 1,940,551		

Rivanna Water & Sewer Authority
Monthly Financial Statements - February 2010

Urban Water Rate Center
Revenues and Expenses Summary

Budget FY 2010	Budget Year-to-Date	Actual Year-to-Date	Budget vs. Actual	Variance Percentage
-------------------	------------------------	------------------------	----------------------	------------------------

Operational Budget vs. Actual

Notes

Revenues

Operations Rate Revenue	\$ 4,221,478	\$ 2,814,319	\$ 2,737,066	\$ (77,253)	-2.74%
Lease Revenue	26,500	17,667	20,619	2,952	16.71%
Grants	-	-	-	-	
Miscellaneous	-	-	8,060	8,060	
Interest Allocation	3,700	2,467	2,266	(201)	-8.15%
Total Operational Revenues	\$ 4,251,678	\$ 2,834,452	\$ 2,768,010	\$ (66,442)	-2.34%

Expenses

Personnel Cost	\$ 1,207,165	\$ 793,529	\$ 806,116	\$ (12,588)	-1.59%
Professional Services	A 12,000	8,000	43,314	(35,314)	-441.43%
Other Services & Charges	584,250	389,500	361,898	27,602	7.09%
Communications	C 28,200	18,800	23,020	(4,220)	-22.45%
Information Technology	D 8,300	5,533	14,059	(8,525)	-154.07%
Supplies	7,650	5,100	2,585	2,515	49.31%
Operations & Maintenance	F 825,000	550,000	437,705	112,295	20.42%
Equipment Purchases	45,800	30,533	14,860	15,674	51.33%
Depreciation	230,000	153,333	153,333	(0)	0.00%
Reserve Transfers	-	-	-	-	
Subtotal Before Allocations	\$ 2,948,365	\$ 1,954,329	\$ 1,856,890	\$ 97,439	4.99%
Allocation of Support Departments	1,303,313	857,055	767,804	89,251	10.41%
Total Operational Expenses	\$ 4,251,678	\$ 2,811,384	\$ 2,624,694	\$ 186,690	6.64%
Operational Surplus/(Deficit)	\$ (0)	\$ 23,068	\$ 143,316		

Debt Service Budget vs. Actual

Revenues

Debt Service Rate Revenue	\$ 5,580,942	\$ 3,720,628	\$ 3,603,148	\$ (117,480)	-3.16%
Trust Fund Interest	25,000	16,667	40,910	24,243	145.46%
Reserve Fund Interest	75,000	50,000	22,925	(27,075)	-54.15%
Buck Mountain Surcharge	120,300	80,200	36,300	(43,900)	-54.74%
Lease Revenue	12,200	8,133	7,299	(834)	-10.26%
Total Debt Service Revenues	\$ 5,813,442	\$ 3,875,628	\$ 3,710,582	\$ (165,046)	-4.26%

Debt Service Costs

Total Principal & Interest	\$ 3,378,596	\$ 2,252,397	\$ 2,252,397	\$ -	0.00%
Reserve Additions-Interest	75,000	50,000	22,925	27,075	54.15%
Reserve Additions-CIP Growth	2,360,659	1,573,773	1,573,773	-	0.00%
Total Debt Service Costs	\$ 5,814,255	\$ 3,876,170	\$ 3,849,095	\$ 27,075	0.70%
Debt Service Surplus/(Deficit)	\$ (813)	\$ (542)	\$ (138,513)		

Rate Center Summary

Total Revenues	\$ 10,065,120	\$ 6,710,080	\$ 6,478,592	\$ (231,488)	-3.45%
Total Expenses	10,065,933	6,687,554	6,473,789	213,765	3.20%
Surplus/(Deficit)	\$ (813)	\$ 22,526	\$ 4,803		
Costs per 1000 Gallons	1.24		1.18		
Thousand Gallons Treated or Flow (MGD)	3,432,018	2,288,012	2,225,257	(62,755)	-2.74%
	9.403		9.157		

Rivanna Water & Sewer Authority
Monthly Financial Statements - February 2010

Crozet Water Rate Center
Revenues and Expenses Summary

Budget FY 2010	Budget Year-to-Date	Actual Year-to-Date	Budget vs. Actual	Variance Percentage
-------------------	------------------------	------------------------	----------------------	------------------------

Operational Budget vs. Actual

Notes

Revenues

Operations Rate Revenue	\$ 444,396	\$ 296,264	\$ 296,264	\$ -	0.00%
Grants	-	-	-	-	
Lease Revenues	27,000	18,000	20,106	2,106	11.70%
Interest Allocation	400	267	243	(24)	-8.99%
Total Operational Revenues	\$ 471,796	\$ 314,531	\$ 316,613	\$ 2,082	0.66%

Expenses

Personnel Cost	\$ 172,957	\$ 113,625	\$ 113,558	\$ 68	0.06%
Professional Services	12,000	8,000	220	7,780	97.25%
Other Services & Charges	64,180	42,787	45,561	(2,774)	-6.48%
Communications	3,310	2,207	2,868	(662)	-29.99%
Information Technology	1,180	787	1,096	(309)	-39.30%
Supplies	750	500	139	361	72.24%
Operations & Maintenance	83,750	55,833	63,549	(7,715)	-13.82%
Equipment Purchases	4,900	3,267	1,949	1,318	40.34%
Depreciation	15,000	10,000	10,000	-	0.00%
Reserve Transfers	-	-	-	-	
Subtotal Before Allocations	\$ 358,027	\$ 237,005	\$ 238,939	\$ (1,934)	-0.82%
Allocation of Support Departments	113,774	74,814	66,914	7,900	10.56%
Total Operational Expenses	\$ 471,801	\$ 311,820	\$ 305,853	\$ 5,966	1.91%
Operational Surplus/(Deficit)	\$ (5)	\$ 2,711	\$ 10,760		

Debt Service Budget vs. Actual

Revenues

Debt Service Rate Revenue	\$ 183,384	\$ 122,256	\$ 122,256	\$ -	0.00%
Trust Fund Interest	1,000	667	2,221	1,555	233.18%
Reserve Fund Interest	-	-	305	305	
Total Debt Service Revenues	\$ 184,384	\$ 122,923	\$ 124,782	\$ 1,860	1.51%

Debt Service Costs

Total Principal & Interest	\$ 183,386	\$ 122,257	\$ 122,257	\$ -	0.00%
Reserve Additions-Interest	-	-	305	(305)	
Total Debt Service Costs	\$ 183,386	\$ 122,257	\$ 122,562	\$ (305)	-0.25%
Debt Service Surplus/(Deficit)	\$ 998	\$ 665	\$ 2,220		

Rate Center Summary

Total Revenues	\$ 656,180	\$ 437,453	\$ 441,395	\$ 3,942	0.90%
Total Expenses	655,187	434,077	428,416	5,661	1.30%
Surplus/(Deficit)	\$ 993	\$ 3,376	\$ 12,980		
Costs per 1000 Gallons	3.55		3.11		
Thousand Gallons Treated	133,000	88,667	98,374	9,707	10.95%
Flow (MGD)	0.364		0.405		

Rivanna Water & Sewer Authority
 Monthly Financial Statements - February 2010

Scottsville Water Rate Center
 Revenues and Expenses Summary

Budget FY 2010	Budget Year-to-Date	Actual Year-to-Date	Budget vs. Actual	Variance Percentage
-------------------	------------------------	------------------------	----------------------	------------------------

Operational Budget vs. Actual

Notes

Revenues

Operations Rate Revenue	\$ 327,516	\$ 218,344	\$ 218,344	\$ -	0.00%
Grants	-	-	-	-	-
Interest Allocation	300	200	181	(19)	-9.61%
Total Operational Revenues	\$ 327,816	\$ 218,544	\$ 218,525	\$ (19)	-0.01%

Expenses

Personnel Cost	\$ 147,852	\$ 97,156	\$ 100,052	\$ (2,896)	-2.98%
Professional Services	12,000	8,000	220	7,780	97.25%
Other Services & Charges	36,180	24,120	64,208	(40,088)	-166.20%
Communications	3,160	2,107	1,862	245	11.64%
Information Technology	1,080	720	1,096	(376)	-52.20%
Supplies	550	367	80	287	78.15%
Operations & Maintenance	37,900	25,267	19,874	5,393	21.34%
Equipment Purchases	7,400	4,933	3,296	1,638	33.19%
Depreciation	15,000	10,000	10,000	-	0.00%
Reserve Transfers	-	-	-	-	-
Subtotal Before Allocations	\$ 261,122	\$ 172,669	\$ 200,688	\$ (28,018)	-16.23%
Allocation of Support Departments	66,698	43,868	39,885	3,984	9.08%
Total Operational Expenses	\$ 327,820	\$ 216,537	\$ 240,572	\$ (24,035)	-11.10%
Operational Surplus/(Deficit)	\$ (4)	\$ 2,007	\$ (22,047)		

Debt Service Budget vs. Actual

Revenues

Debt Service Rate Revenue	\$ 57,551	\$ 38,367	\$ 38,368	\$ 1	0.00%
Trust Fund Interest	300	200	698	498	248.75%
Reserve Fund Interest	-	-	540	540	-
Total Debt Service Revenues	\$ 57,851	\$ 38,567	\$ 39,605	\$ 1,038	2.69%

Debt Service Costs

Total Principal & Interest	\$ 57,551	\$ 38,367	\$ 38,367	\$ -	0.00%
Reserve Additions-Interest	-	-	540	(540)	-
Total Debt Service Costs	\$ 57,551	\$ 38,367	\$ 38,907	\$ (540)	-1.41%
Debt Service Surplus/(Deficit)	\$ 300	\$ 200	\$ 698		

Rate Center Summary

Total Revenues	\$ 385,667	\$ 257,111	\$ 258,130	\$ 1,019	0.40%
Total Expenses	385,371	254,905	279,479	(24,575)	-9.64%
Surplus/(Deficit)	\$ 296	\$ 2,207	\$ (21,349)		
Costs per 1000 Gallons	7.68		11.68		
Thousand Gallons Treated or Flow (MGD)	42,700	28,467	20,595	(7,872)	-27.65%
	0.117		0.085		

Rivanna Water & Sewer Authority
 Monthly Financial Statements - February 2010

Urban Wastewater Rate Center
 Revenues and Expenses Summary

<i>Budget FY 2010</i>	<i>Budget Year-to-Date</i>	<i>Actual Year-to-Date</i>	<i>Budget vs. Actual</i>	<i>Variance Percentage</i>
---------------------------	--------------------------------	--------------------------------	------------------------------	--------------------------------

Operational Budget vs. Actual

Notes

Revenues

Operations Rate Revenue	\$ 5,178,723	\$ 3,452,482	\$ 4,379,890	\$ 927,408	26.86%
Stone Robinson WWTP	21,467	14,311	10,239	(4,073)	-28.46%
High Strength Surcharge	55,000	36,667	19,298	(17,369)	-47.37%
Septage Acceptance	240,000	160,000	154,421	(5,579)	-3.49%
Lease Revenues	6,600	4,400	-	(4,400)	-100.00%
Miscellaneous Revenue	-	-	7,276	7,276	
Interest Allocation	5,200	3,467	3,174	(293)	-8.45%
Total Operational Revenues	\$ 5,506,990	\$ 3,671,327	\$ 4,574,297	\$ 902,970	24.60%

Expenses

Personnel Cost	\$ 901,100	\$ 592,042	\$ 561,418	\$ 30,624	5.17%
Professional Services	A -	-	7,685	(7,685)	
Other Services & Charges	1,322,630	881,753	769,458	112,296	12.74%
Communications	13,870	9,247	8,989	258	2.79%
Information Technology	3,800	2,533	162	2,371	93.59%
Supplies	1,500	1,000	1,475	(475)	-47.46%
Operations & Maintenance	G 1,030,971	687,314	699,778	(12,464)	-1.81%
Equipment Purchases	51,625	34,417	28,097	6,320	18.36%
Depreciation	450,000	300,000	300,000	-	0.00%
Reserve Transfers	-	-	-	-	
Subtotal Before Allocations	\$ 3,775,496	\$ 2,508,306	\$ 2,377,062	\$ 131,244	5.23%
Allocation of Support Departments	1,731,495	1,138,958	1,045,982	92,976	8.16%
Total Operational Expenses	\$ 5,506,991	\$ 3,647,264	\$ 3,423,044	\$ 224,220	6.15%
Operational Surplus/(Deficit)	\$ (1)	\$ 24,063	\$ 1,151,253		

Debt Service Budget vs. Actual

Revenues

Debt Service Rate Revenue	\$ 4,339,839	\$ 2,893,226	\$ 3,650,862	\$ 757,636	26.19%
Trust Fund Interest	40,000	26,667	22,585	(4,082)	-15.31%
Reserve Fund Interest	15,000	10,000	15,019	5,019	50.19%
Total Debt Service Revenues	\$ 4,394,839	\$ 2,929,893	\$ 3,688,465	\$ 758,572	25.89%

Debt Service Costs

Total Principal & Interest	\$ 1,865,144	\$ 1,243,429	\$ 1,254,316	\$ (10,887)	-0.88%
Reserve Additions-Interest	40,000	26,667	15,019	11,648	43.68%
Reserve Additions-CIP Growth	2,488,994	1,659,329	1,659,329	-	0.00%
Total Debt Service Costs	\$ 4,394,138	\$ 2,929,425	\$ 2,928,664	\$ 761	0.03%
Debt Service Surplus/(Deficit)	\$ 701	\$ 467	\$ 759,801		

Rate Center Summary

Total Revenues	\$ 9,901,829	\$ 6,601,219	\$ 8,262,762	\$ 1,661,543	25.17%
Total Expenses	9,901,129	6,576,689	6,351,708	224,981	3.42%
Surplus/(Deficit)	\$ 700	\$ 24,530	\$ 1,911,054		
Costs per 1000 Gallons	1.68		1.24		
Thousand Gallons Treated or Flow (MGD)	3,271,523	2,181,015	2,766,829	585,814	26.86%

Rivanna Water & Sewer Authority
 Monthly Financial Statements - February 2010

Glenmore Wastewater Rate Center
 Revenues and Expenses Summary

<i>Budget FY 2010</i>	<i>Budget Year-to-Date</i>	<i>Actual Year-to-Date</i>	<i>Budget vs. Actual</i>	<i>Variance Percentage</i>
---------------------------	--------------------------------	--------------------------------	------------------------------	--------------------------------

Operational Budget vs. Actual

Notes

Revenues

Operations Rate Revenue	\$ 273,360	\$ 182,240	\$ 182,240	\$ -	0.00%
Interest Allocation	300	200	159	(41)	-20.33%
<i>Total Operational Revenues</i>	\$ 273,660	\$ 182,440	\$ 182,399	\$ (41)	-0.02%

Expenses

Personnel Cost	\$ 56,520	\$ 37,128	\$ 39,686	\$ (2,558)	-6.89%
Professional Services	-	-	-	-	-
Other Services & Charges	29,100	19,400	17,519	1,881	9.69%
Communications	1,905	1,270	1,528	(258)	-20.29%
Information Technology	300	200	-	200	100.00%
Supplies	200	133	4	129	96.96%
Operations & Maintenance	121,122	80,748	65,855	14,893	18.44%
Equipment Purchases	2,700	1,800	1,591	209	11.64%
Depreciation	2,000	1,333	1,333	(0)	0.00%
<i>Subtotal Before Allocations</i>	\$ 213,847	\$ 142,013	\$ 127,516	\$ 14,496	10.21%
Allocation of Support Departments	59,810	39,358	36,822	2,536	6.44%
<i>Total Operational Expenses</i>	\$ 273,657	\$ 181,371	\$ 164,339	\$ 17,032	9.39%
<i>Operational Surplus/(Deficit)</i>	\$ 3	\$ 1,069	\$ 18,061		

Debt Service Budget vs. Actual

Revenues

Debt Service Rate Revenue	\$ 2,254	\$ 1,503	\$ 1,504	\$ 1	0.09%
Trust Fund Interest	-	-	27	27	
Reserve Fund Interest	-	-	63	63	
<i>Total Debt Service Revenues</i>	\$ 2,254	\$ 1,503	\$ 1,594	\$ 28	1.89%

Debt Service Costs

Total Principal & Interest	\$ 2,254	\$ 1,503	\$ 1,503	\$ -	0.00%
Reserve Additions-Interest	-	-	63	(63)	
<i>Total Debt Service Costs</i>	\$ 2,254	\$ 1,503	\$ 1,565	\$ (63)	-4.17%
<i>Debt Service Surplus/(Deficit)</i>	\$ -	\$ -	\$ 28		

Rate Center Summary					
Total Revenues	\$ 275,914	\$ 183,943	\$ 183,993	\$ 50	0.03%
Total Expenses	275,911	182,873	165,904	16,970	9.28%
Surplus/(Deficit)	\$ 3	\$ 1,069	\$ 18,089		
Thousand Gallons Treated or Flow (MGD)	43,100	28,733	30,119	1,386	4.82%
	0.118		0.124		

Rivanna Water & Sewer Authority
 Monthly Financial Statements - February 2010

Scottsville Wastewater Rate Center
 Revenues and Expenses Summary

<i>Budget FY 2010</i>	<i>Budget Year-to-Date</i>	<i>Actual Year-to-Date</i>	<i>Budget vs. Actual</i>	<i>Variance Percentage</i>
---------------------------	--------------------------------	--------------------------------	------------------------------	--------------------------------

Operational Budget vs. Actual

Notes

Revenues

Operations Rate Revenue	\$ 196,884	\$ 131,256	\$ 131,256	\$ -	0.00%
Interest Allocation	200	133	106	(27)	-20.49%
Total Operational Revenues	\$ 197,084	\$ 131,389	\$ 131,362	\$ (27)	-0.02%

Expenses

Personnel Cost	\$ 68,784	\$ 45,181	\$ 43,665	\$ 1,516	3.35%
Professional Services	-	-	-	-	-
Other Services & Charges	16,325	10,883	15,058	(4,175)	-38.36%
Communications	2,505	1,670	1,842	(172)	-10.29%
Information Technology	300	200	-	200	100.00%
Supplies	100	67	4	63	93.93%
Operations & Maintenance	31,555	21,037	9,680	11,356	53.98%
Equipment Purchases	2,700	1,800	595	1,205	66.96%
Depreciation	15,000	10,000	10,000	-	0.00%
Subtotal Before Allocations	\$ 137,269	\$ 90,837	\$ 80,844	\$ 9,993	11.00%
Allocation of Support Departments	59,810	39,358	36,822	2,536	6.44%
Total Operational Expenses	\$ 197,079	\$ 130,196	\$ 117,666	\$ 12,529	9.62%
Operational Surplus/(Deficit)	\$ 5	\$ 1,194	\$ 13,696		

Debt Service Budget vs. Actual

Revenues

Debt Service Rate Revenue	\$ 105,711	\$ 70,474	\$ 70,472	\$ (2)	0.00%
Trust Fund Interest	300	200	1,280	1,080	539.98%
Reserve Fund Interest	-	-	270	270	
Total Debt Service Revenues	\$ 106,011	\$ 70,674	\$ 72,022	\$ 1,348	1.91%

Debt Service Costs

Total Principal & Interest	\$ 105,710	\$ 70,473	\$ 70,473	\$ -	0.00%
Reserve Additions-Interest	-	-	270	(270)	
Total Debt Service Costs	\$ 105,710	\$ 70,473	\$ 70,743	\$ (270)	-0.38%
Debt Service Surplus/(Deficit)	\$ 301	\$ 201	\$ 1,279		

Rate Center Summary					
Total Revenues	\$ 303,095	\$ 202,063	\$ 203,384	\$ 1,321	0.65%
Total Expenses	302,789	200,669	188,409	12,259	6.11%
Surplus/(Deficit)	\$ 306	\$ 1,394	\$ 14,974		
Thousand Gallons Treated or Flow (MGD)	27,900	18,600	21,739	3,139	16.88%
	0.076		0.089		

Rivanna Water & Sewer Authority
Monthly Financial Statements - February 2010

Administration

Budget FY 2010	Budget Year-to-Date	Actual Year-to-Date	Budget vs. Actual	Variance Percentage
-------------------	------------------------	------------------------	----------------------	------------------------

Operational Budget vs. Actual

Notes

Revenue

Payment for Services SWA	\$ 418,000	\$ 278,667	\$ 278,667	\$ (0)	0.00%
Miscellaneous Revenue	1,000	667	1,422	756	113.37%
Total Operational Revenues	\$ 419,000	\$ 279,333	\$ 280,089	\$ 756	0.27%

Expenses

Personnel Cost	\$ 1,024,511	\$ 672,543	\$ 624,375	\$ 48,168	7.16%
Professional Services	150,000	100,000	76,594	23,406	23.41%
Other Services & Charges	108,015	72,010	58,170	13,840	19.22%
Communications	12,000	8,000	10,537	(2,537)	-31.71%
Information Technology	57,100	38,067	27,153	10,914	28.67%
Supplies	32,000	21,333	15,980	5,354	25.10%
Operations & Maintenance	14,700	9,800	9,647	153	1.56%
Equipment Purchases	6,750	4,500	4,167	333	7.41%
Depreciation	-	-	-	-	-
Total Operational Expenses	\$ 1,405,076	\$ 926,253	\$ 826,622	\$ 99,631	10.76%

Department Summary					
--------------------	--	--	--	--	--

Net Costs Allocable to Rate Centers		\$ (986,076)	\$ (646,920)	\$ (546,533)	\$ (100,387)	15.52%
Allocations to the Rate Centers						
Urban Water	44.00%	\$ 433,873	\$ 284,645	\$ 240,475	\$ 44,170	
Crozet Water	4.00%	\$ 39,443	\$ 25,877	\$ 21,861	\$ 4,015	
Scottsville Water	2.00%	\$ 19,722	\$ 12,938	\$ 10,931	\$ 2,008	
Urban Wastewater	48.00%	\$ 473,316	\$ 310,522	\$ 262,336	\$ 48,186	
Glenmore Wastewater	1.00%	\$ 9,861	\$ 6,469	\$ 5,465	\$ 1,004	
Scottsville Wastewater	1.00%	\$ 9,861	\$ 6,469	\$ 5,465	\$ 1,004	
	100.00%	\$ 986,076	\$ 646,920	\$ 546,533	\$ 100,387	

Rivanna Water & Sewer Authority
Monthly Financial Statements - February 2010

Maintenance Summary

Budget FY 2010	Budget Year-to-Date	Actual Year-to-Date	Budget vs. Actual	Variance Percentage
-------------------	------------------------	------------------------	----------------------	------------------------

Operational Budget vs. Actual

Notes

Projected Revenue

N/A

Projected Expenses

Personnel Cost	\$ 801,295	\$ 526,233	\$ 527,324	\$ (1,091)	-0.21%
Professional Services	500	333	-	333	100.00%
Other Services & Charges	29,850	19,900	8,351	11,549	58.03%
Communications	7,270	4,847	9,284	(4,438)	-91.56%
Information Technology	4,100	2,733	2,532	201	7.37%
Supplies	500	333	302	31	9.31%
Operations & Maintenance	43,300	28,867	26,809	2,057	7.13%
Equipment Purchases	94,300	62,867	68,162	(5,296)	-8.42%
Depreciation	-	-	-	-	
Total Operational Expenses	\$ 981,115	\$ 646,113	\$ 642,765	\$ 3,347	0.52%

Department Summary					
--------------------	--	--	--	--	--

Net Costs Allocable to Rate Centers		\$ (981,115)	\$ (646,113)	\$ (642,765)	\$ (3,347)	0.52%
Allocations to the Rate Centers						
Urban Water	24.00%	\$ 235,468	\$ 155,067	\$ 154,264	\$ 803	
Crozet Water	2.00%	19,622	12,922	12,855	67	
Scottsville Water	2.00%	19,622	12,922	12,855	67	
Urban Wastewater	66.00%	647,536	426,434	424,225	2,209	
Glenmore Wastewater	3.00%	29,433	19,383	19,283	100	
Scottsville Wastewater	3.00%	29,433	19,383	19,283	100	
	100.00%	\$ 981,115	\$ 646,113	\$ 642,765	\$ 3,347	

Rivanna Water & Sewer Authority
 Monthly Financial Statements - February 2010

Laboratory Summary

<i>Budget FY 2010</i>	<i>Budget Year-to-Date</i>	<i>Actual Year-to-Date</i>	<i>Budget vs. Actual</i>	<i>Variance Percentage</i>
---------------------------	--------------------------------	--------------------------------	------------------------------	--------------------------------

Operational Budget vs. Actual

Notes

Projected Revenue

N/A

Projected Expenses

Personnel Cost	\$ 214,712	\$ 140,959	\$ 137,656	\$ 3,303	2.34%
Professional Services	-	-	-	-	-
Other Services & Charges	14,310	9,540	7,282	2,258	23.67%
Communications	-	-	-	-	-
Information Technology	3,200	2,133	1,158	976	45.73%
Supplies	800	533	556	(23)	-4.30%
Operations & Maintenance	48,000	32,000	26,089	5,911	18.47%
Equipment Purchases	14,000	9,333	2,310	7,023	75.25%
Depreciation	-	-	-	-	-
<i>Total Operational Expenses</i>	\$ 295,022	\$ 194,499	\$ 175,051	\$ 19,448	10.00%

Department Summary

Net Costs Allocable to Rate Centers		\$ (295,022)	\$ (194,499)	\$ (175,051)	\$ (19,448)	10.00%
<u>Allocations to the Rate Centers</u>						
Urban Water	44.00%	\$ 129,810	\$ 85,580	\$ 77,023	\$ 8,557	
Crozet Water	4.00%	11,801	7,780	7,002	778	
Scottsville Water	2.00%	5,900	3,890	3,501	389	
Urban Wastewater	47.00%	138,660	91,414	82,274	9,140	
Glenmore Wastewater	1.50%	4,425	2,917	2,626	292	
Scottsville Wastewater	1.50%	4,425	2,917	2,626	292	
	100.00%	\$ 295,022	\$ 194,499	\$ 175,051	\$ 19,448	

Rivanna Water & Sewer Authority
Monthly Financial Statements - February 2010

Engineering Summary

Budget FY 2010	Budget Year-to-Date	Actual Year-to-Date	Budget vs. Actual	Variance Percentage
-------------------	------------------------	------------------------	----------------------	------------------------

Operational Budget vs. Actual

Projected Revenue

N/A

Projected Expenses

Personnel Cost	\$ 895,926	\$ 588,040	\$ 572,635	\$ 15,406	2.62%
Professional Services	15,000	10,000	5,453	4,547	45.47%
Other Services & Charges	50,460	33,640	9,504	24,136	71.75%
Communications	8,550	5,700	7,162	(1,462)	-25.65%
Information Technology	29,500	19,667	2,805	16,862	85.74%
Supplies	7,250	4,833	4,004	829	17.16%
Operations & Maintenance	18,400	12,267	14,050	(1,783)	-14.54%
Equipment Purchases	47,600	31,733	14,267	17,466	55.04%
Depreciation & Capital Reserve Transfers	-	-	-	-	
<i>Total Operational Expenses</i>	\$ 1,072,686	\$ 705,880	\$ 629,880	\$ 76,001	10.77%

Department Summary

Net Costs Allocable to Rate Centers	\$ (1,072,686)	\$ (705,880)	\$ (629,880)	\$ (76,001)	10.77%
<u>Allocations to the Rate Centers</u>					
Urban Water	47.00%	\$ 504,162	\$ 331,764	\$ 296,043	\$ 35,720
Crozet Water	4.00%	42,907	28,235	25,195	3,040
Scottsville Water	2.00%	21,454	14,118	12,598	1,520
Urban Wastewater	44.00%	471,982	310,587	277,147	33,440
Glenmore Wastewater	1.50%	16,090	10,588	9,448	1,140
Scottsville Wastewater	1.50%	16,090	10,588	9,448	1,140
	100.00%	\$ 1,072,686	\$ 705,880	\$ 629,880	\$ 76,001