

**MEMORANDUM**

**TO: RIVANNA WATER & SEWER AUTHORITY  
BOARD OF DIRECTORS**

**FROM: ROBERT C. WICHSER  
DIRECTOR WATER & WASTEWATER**

**REVIEWED BY: THOMAS L. FREDERICK  
EXECUTIVE DIRECTOR**

**SUBJECT: OPERATIONS REPORT FOR FEBRUARY 2010**

**DATE: MARCH 23, 2010**

**WATER OPERATIONS:**

Average daily/monthly total water send-out for the month of February 2010 is as follows:

<i>Water Purification Plant</i>	<i>MGD/MG for Month</i>
Observatory	2.87 / 80.3
South Rivanna	5.6 / 157.9
North Rivanna	0.34 / 9.6
<i>Urban Total</i>	8.8 / 247.8
Crozet	0.40 / 11.3
Scottsville	0.08 / 2.2

- All RWSA water production facilities remained in 100% compliance with the Safe Drinking Water Act during the month of February.

**Status of Reservoirs (As of March 12th) - Urban reservoirs at 100% usable capacity:**

- Ragged Mountain Reservoir is full.
- Beaver Creek Reservoir is full.
- Sugar Hollow Reservoir is full. At times, a log lying across the dam's bladder causes a drop in the normal pool level. Inasmuch as the current flows over the spillway would be a safety hazard to personnel activity on the reservoir near the dam, we are monitoring conditions in the work area until it is safe to remove the log.
- Totier Creek Reservoir is full.
- South Rivanna Reservoir is full.

**WASTEWATER OPERATIONS:**

Performance of the WWTPs was as follows for February 2010 versus respective permit limits:

<i>WWTP</i>	<i>AVE. DAILY FLOW (MGD)</i>	<i>AVE. BOD (ppm)</i>	<i>PERMIT (ppm)</i>	<i>AVE. TSS (ppm)</i>	<i>PERMIT (ppm)</i>
Moore's Creek	12.1	<QL	11	5	22
Camelot	0.091	9	30	13	30
Glenmore	0.149	<QL	15	4	30
Scottsville	0.118	6	30	8	30
Stone Rob	0.001	NR	30	NR	30

NR- Not Required

<QL: Less than analytical method quantitative level

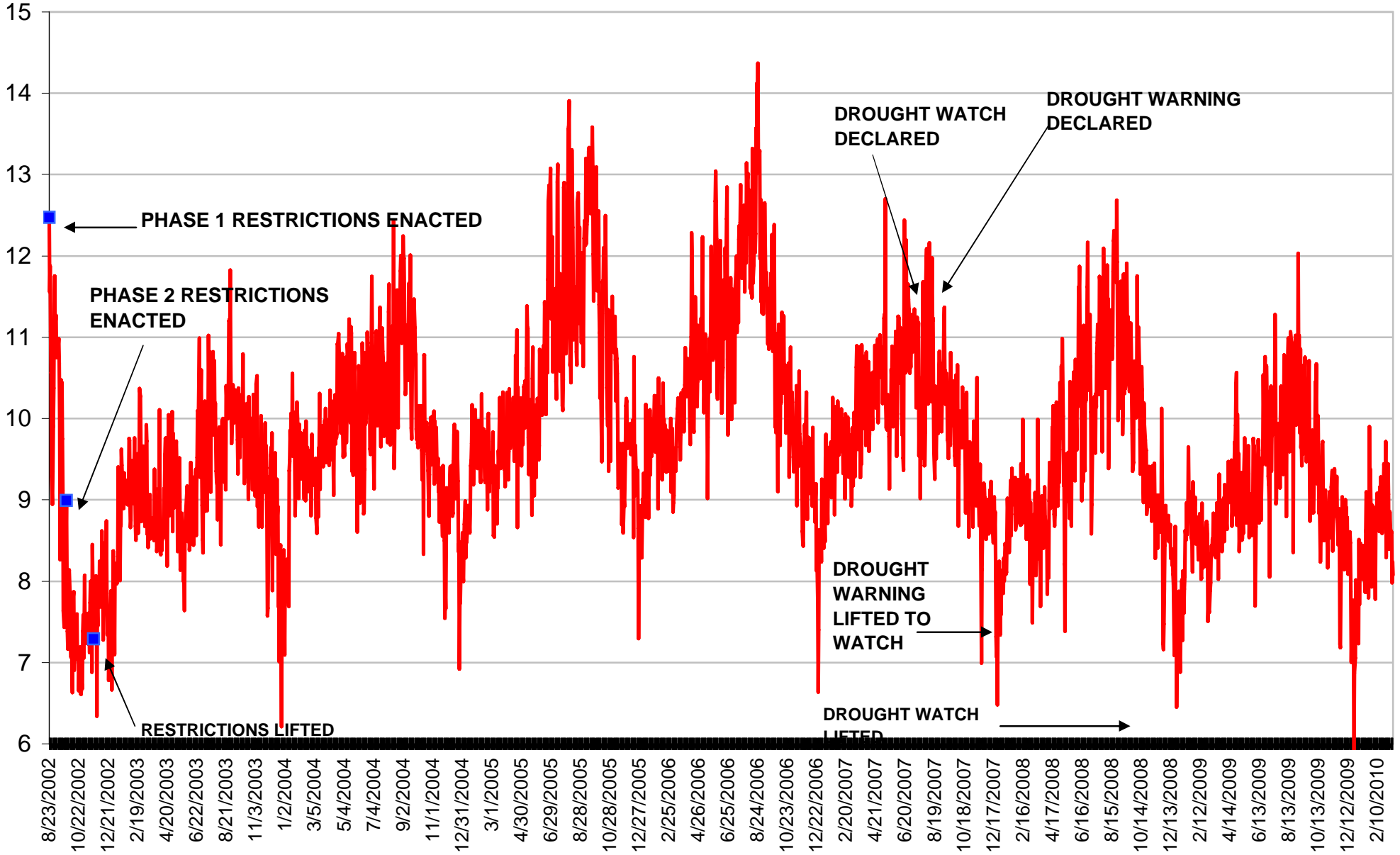
- All RWSA wastewater facilities were in regulatory compliance with their effluent concentration limits during the month of February.
- There were no odor complaints related to Crozet Pump Station No. 1 during this current reporting period.
- There were no odor complaints related to the Moore's Creek WWTP facility during this current reporting period.

Additionally, the attached graphs are for your review and information. If you have any additional questions, please do not hesitate in contacting me at: 977-2970, Ext: 155.

cc: D. Golladay  
C. Lang  
Attachments

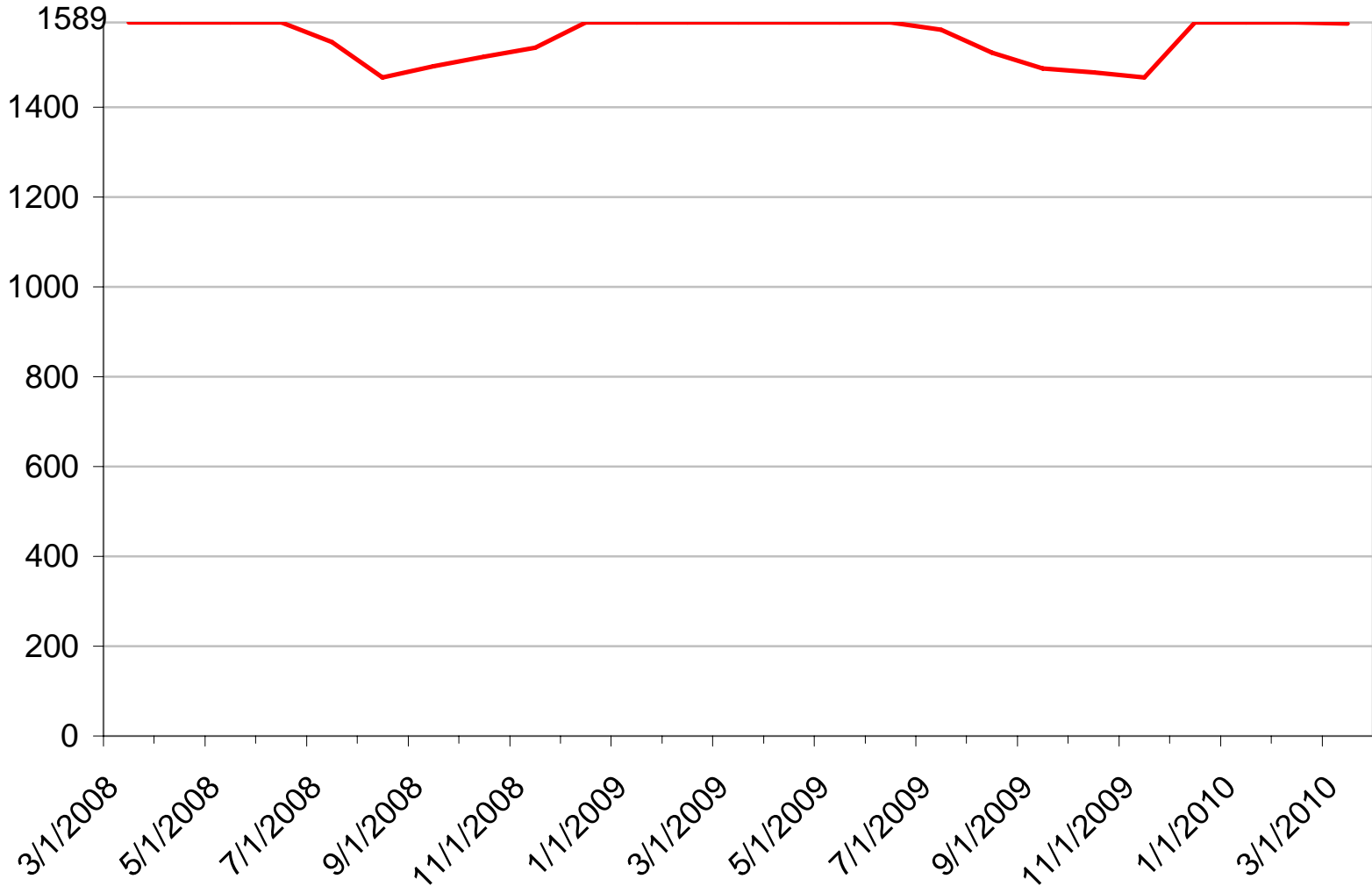
Million Gallons

# Daily Water Consumption



# Urban Raw Water Storage\*

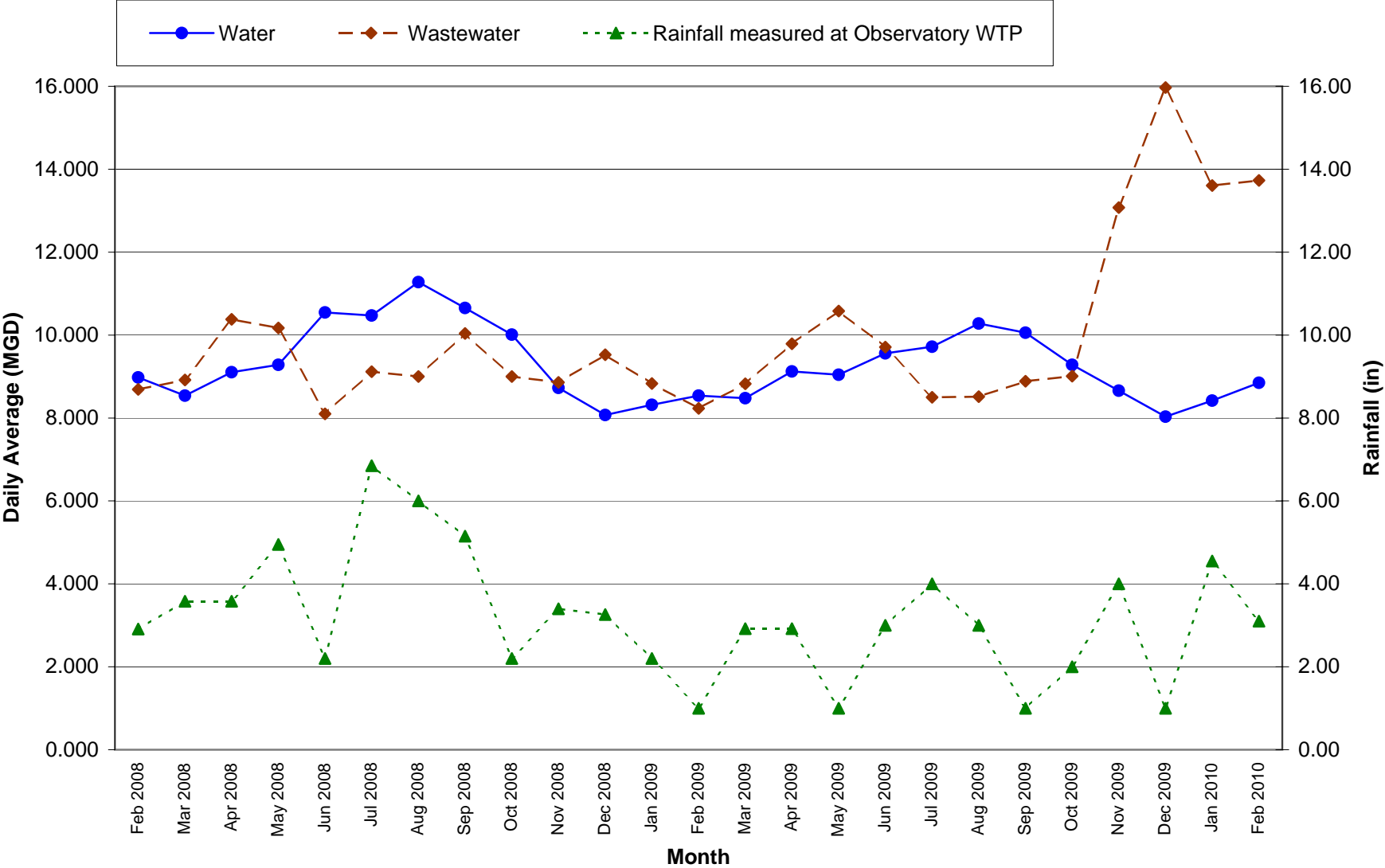
Million Gallons



\* Includes the South Fork Rivanna, Sugar Hollow, and Ragged Mtn Reservoirs.

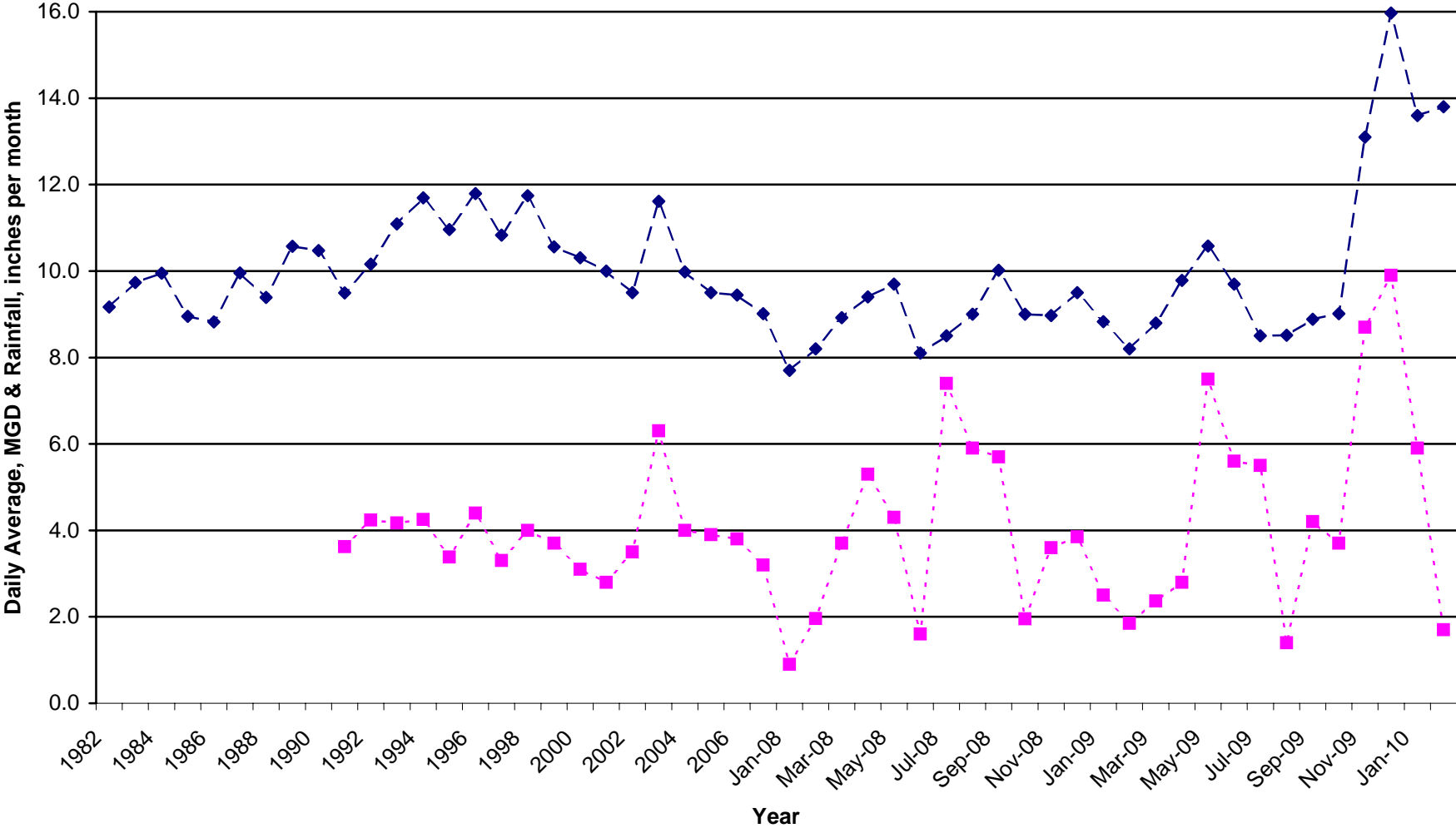
Date

### Urban Monthly Production

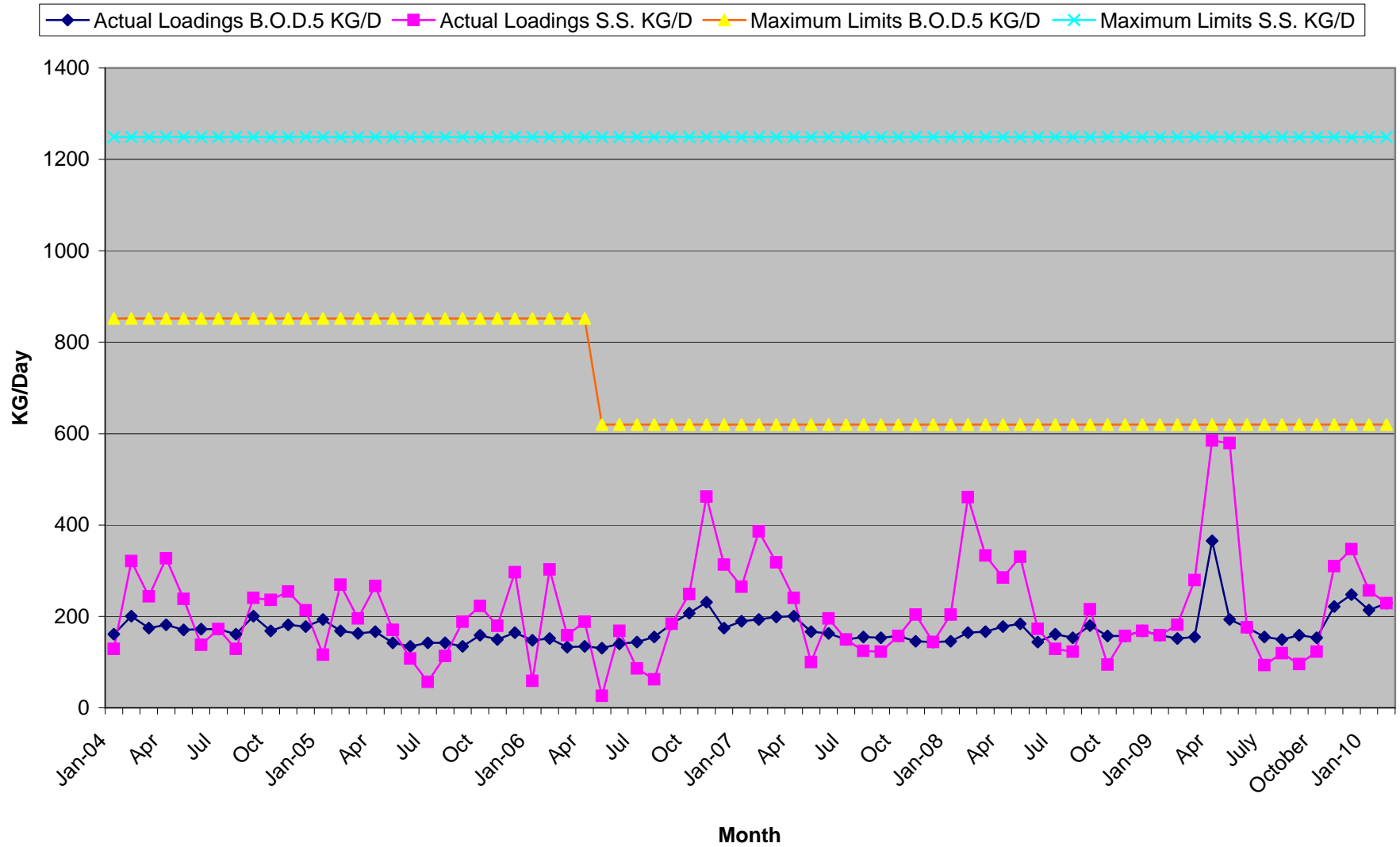


### UWW Annual Flows & Rainfall Data

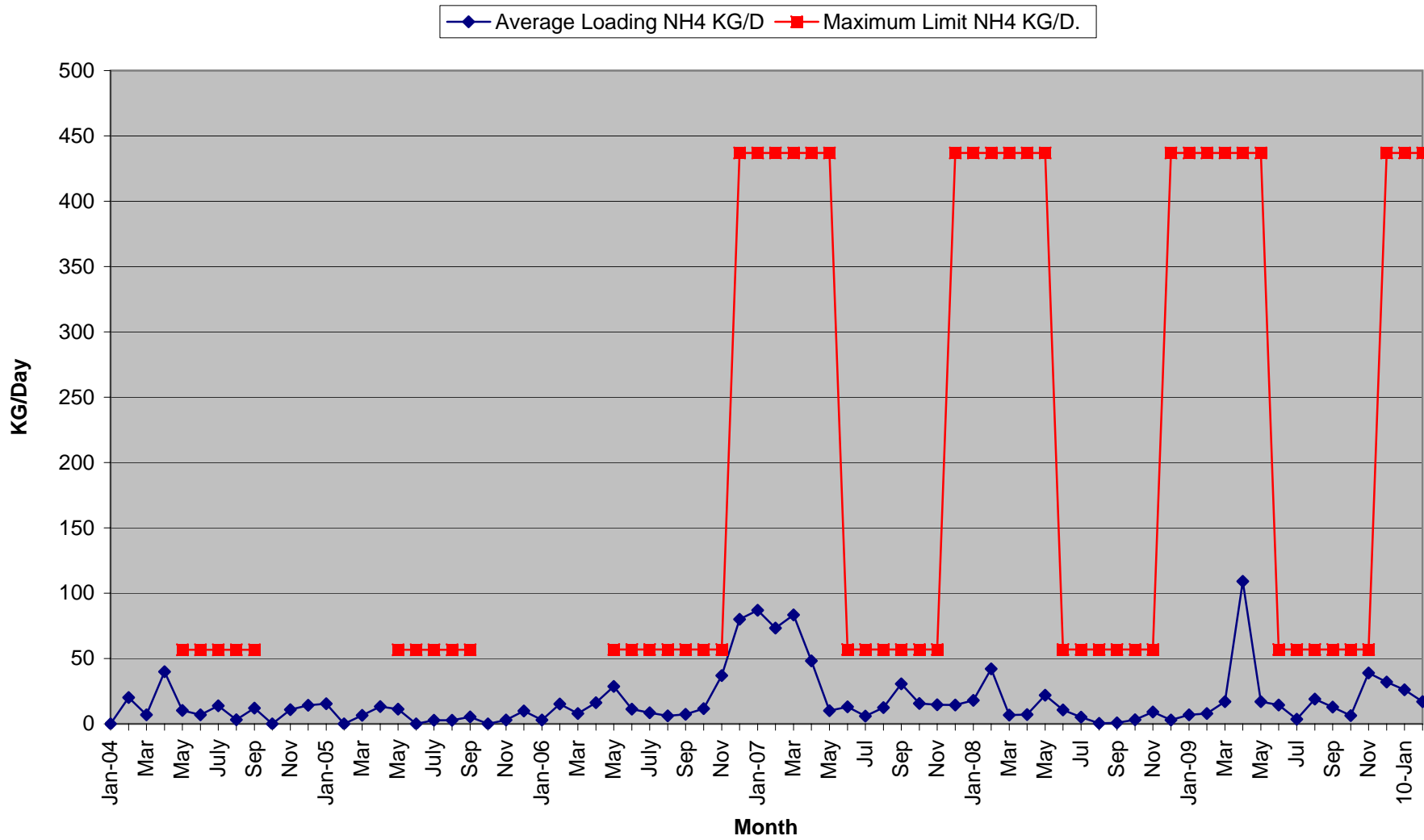
—◆— MGD      - - -■- - Rainfall, Average inches per Month measured at Moores Creek WWTP



### Moore's Creek AWT Plant To Receiving Stream



## Moores Creek AWT Plant To Receiving Stream



Note: NH<sub>4</sub> limits shown reflect changes from the renewal of the facility's VPDES Permit on May 1, 2006.