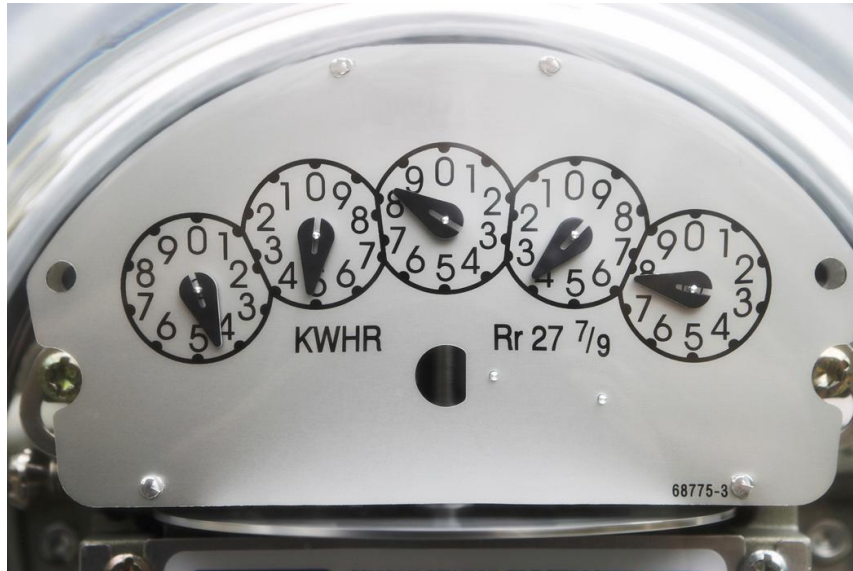


RWSA Partners with EnerNOC to Reduce Electric Grid Peak Demand



RWSA is participating with EnerNOC to reduce our energy demands by reducing our energy use from the electric grid during peak demand periods. EnerNOC is a Boston-based energy management company that uses a sophisticated energy network operations center to track and anticipate total energy use on the electrical grid in the Mid-Atlantic region. EnerNOC provides electric demand-side management services to electric utilities and PJM, the major Mid-Atlantic electric grid operator by reducing peak demand for power – this reduction in demand eases grid congestion, eliminates the need for utilities to purchase energy at increased rates during peak demand periods, protects communities from “brown outs” and blackouts when energy demand exceeds supply, and can even avoid the need for new power plants.

EnerNOC achieves these reductions by contracting with industries, universities, and municipal organizations (like RWSA) across the country to voluntarily reduce energy consumption during peak demand periods. Between June 1st and September 30th, when EnerNOC notifies RWSA that a peak energy demand on the electrical grid is imminent, RWSA will “go off the grid” at the Moore’s Creek WWTP and the South Rivanna WTP and rely solely on our stand-by generators for up to 6 hours at a time, up to 10 times, without disruption to our water treatment and wastewater treatment processes. RWSA has coordinated with the Virginia Department of Environmental Quality to obtain approval to utilize our stand-by generators for this practice.

EnerNOC produces income from utilities and grid operators for this “demand response management”, since it provides additional energy capacity without the need to build costly new power sources. That revenue is shared with those organizations that voluntarily reduce their energy usage. It is anticipated that RWSA will be able to earn an estimated \$60,000 annually in revenues through participation in this program.