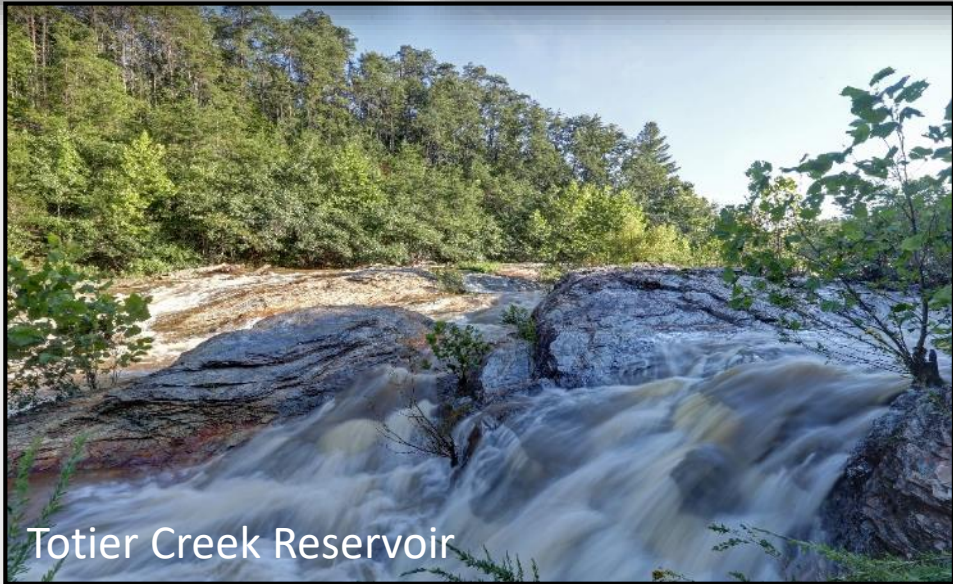




May 31, 2018

# Reservoirs















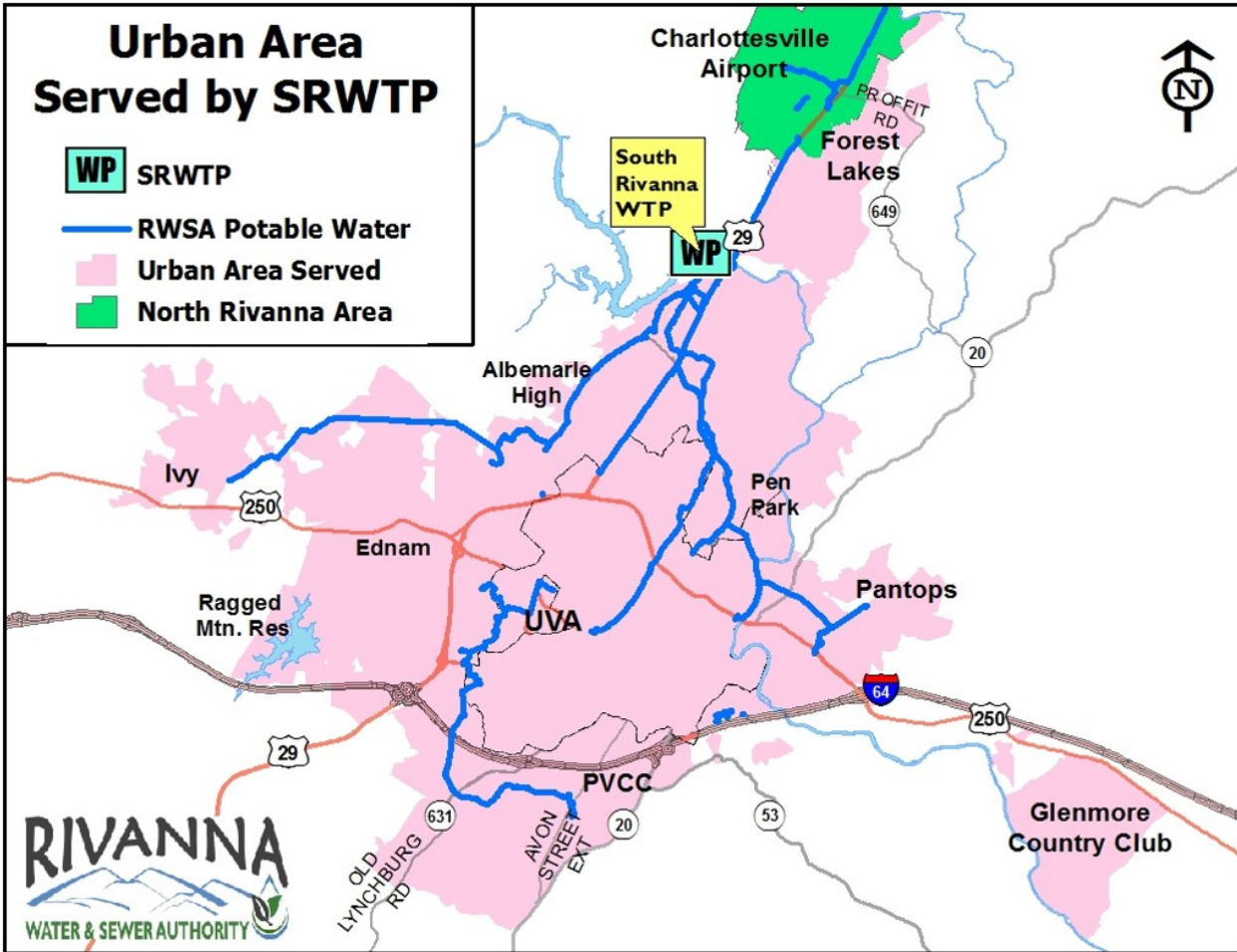


- 1:45 am today, 7.1 feet of water flowing over the South Rivanna Reservoir Dam, about 26 billion gallons per day
- Initiated the Emergency Action Plan required by State and Federal Dam Safety Agencies
- Notified Emergency Management Agencies
- 12:30 pm today, 3.2 feet of water flowing over the South Rivanna Reservoir Dam
- Engineers have been inspecting the dams for any damage
- Closed the South Rivanna Reservoir boat ramp and all dams for safety

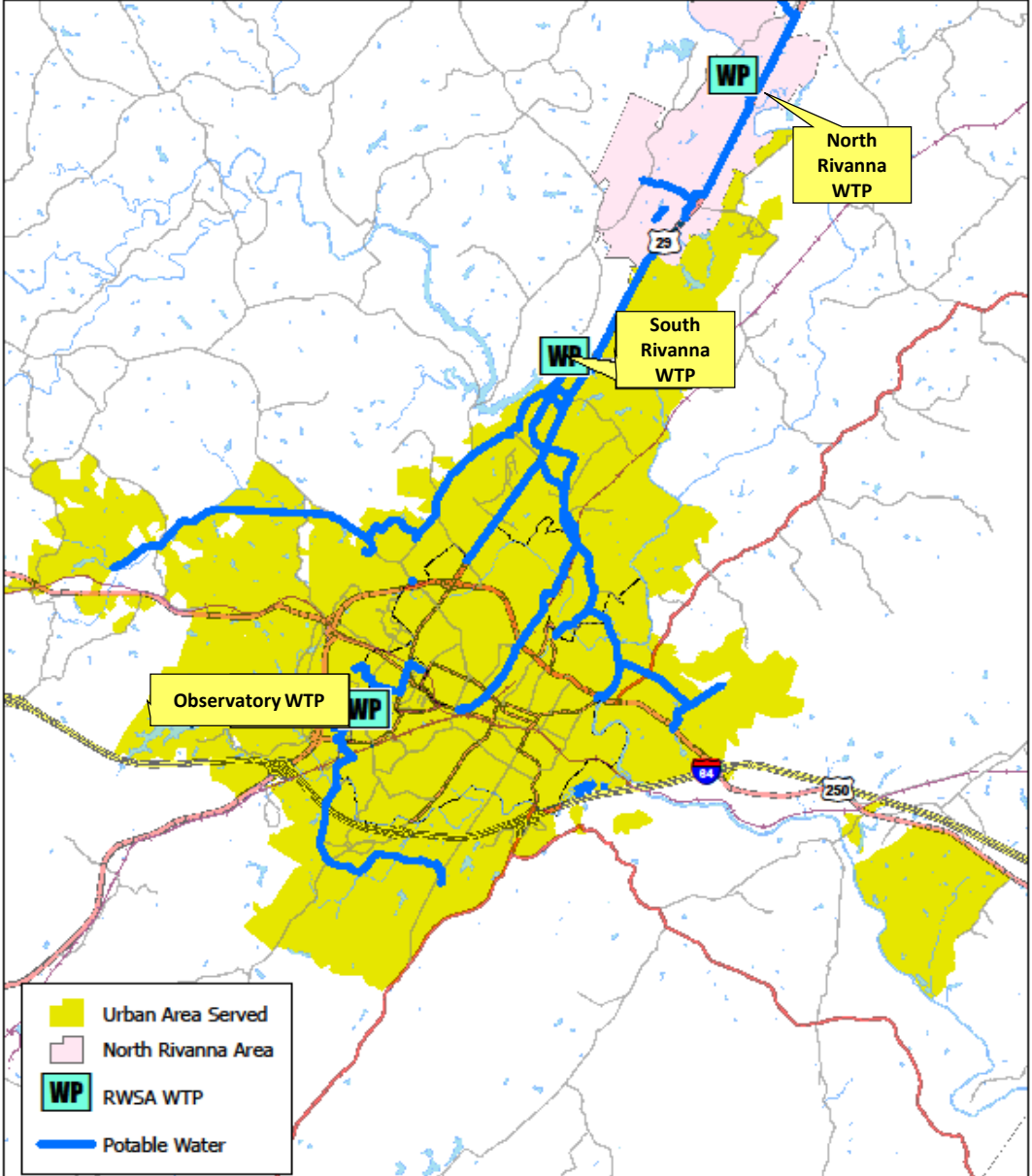


# Urban Area Served by SRWTP

- WP** SRWTP
- RWSA Potable Water
- Urban Area Served
- North Rivanna Area



# Urban Area Served by SRWTP & OBSWTP



- Urban Area Served
- North Rivanna Area
- WP** RWSA WTP
- Potable Water

1 in = 9,167 feet  
 Feet  
 0 3,600 7,200 10,800  
 Date: 12/20/2016



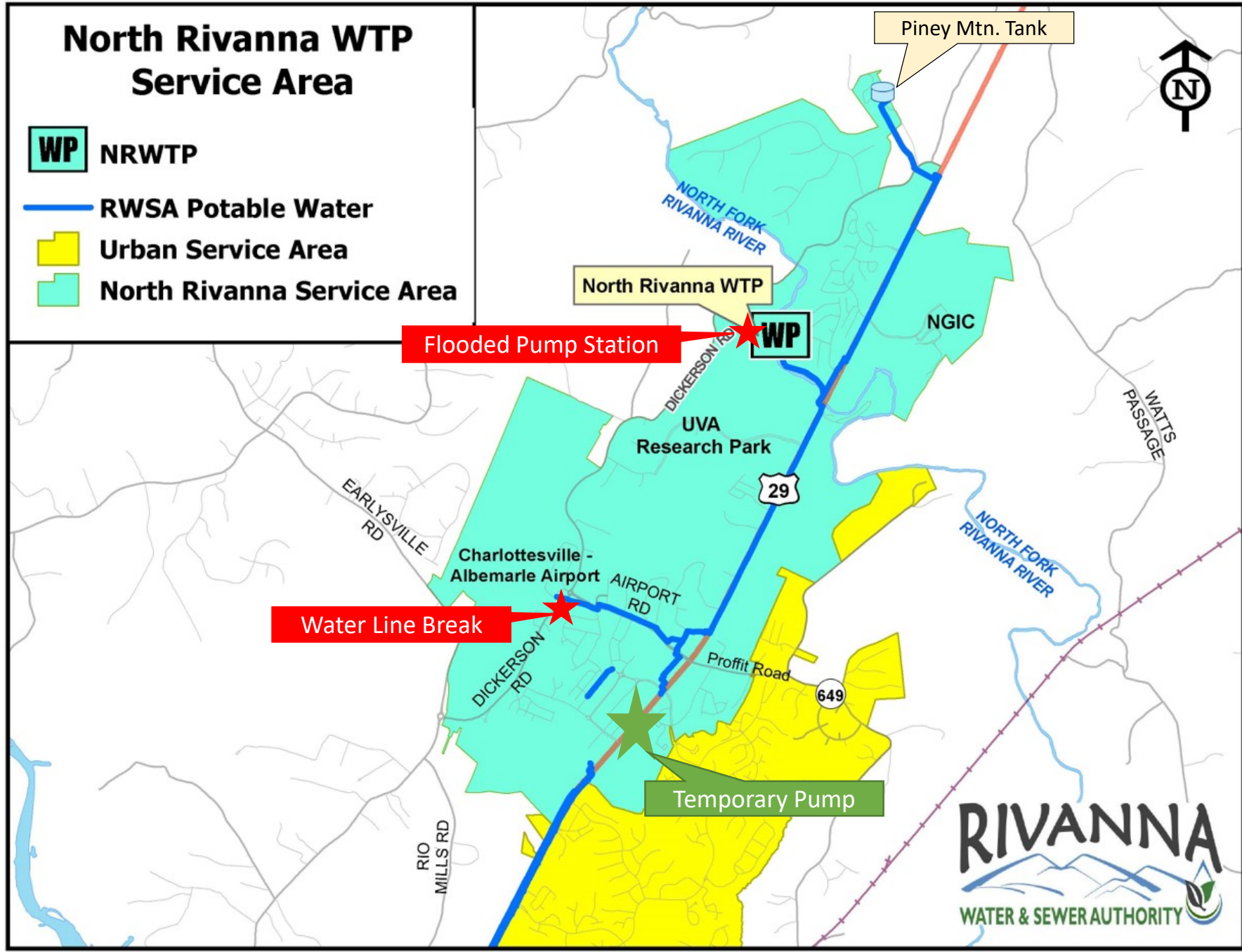
695 Moores Creek Lane  
 Charlottesville, VA 22902  
 p.434-977-2970  
[www.rivanna.org](http://www.rivanna.org)  
[www.rivannagis.org](http://www.rivannagis.org)

Data used in this map was provided by the RWSA, City of Charlottesville, and UVA FM Dept. Duplication of data or redistribution of this map without permission from the RWSA Engineering Dept. is prohibited.



# North Rivanna WTP Service Area

- WP** NRWTP
- Blue Line** RWSA Potable Water
- Yellow Area** Urban Service Area
- Cyan Area** North Rivanna Service Area







- 4:45 am today, Piney Mountain Tank level declined from 24 to 12 feet of water stored, indicating a water line break in the system
- 12:30 pm today, 10.5 feet remaining in the Piney Mountain Tank, providing water for the next 24 hours
- RWSA and ACSA Staff are working to test and refill the water distribution system
- A “boil water” notice has been issued for the affected area by the ACSA