

Meeting with the Community

to Review the

South Rivanna Reservoir to Ragged Mountain Reservoir

Water Line Project

*A Component of the Community Water Supply Plan*



Bill Mawyer, Executive Director

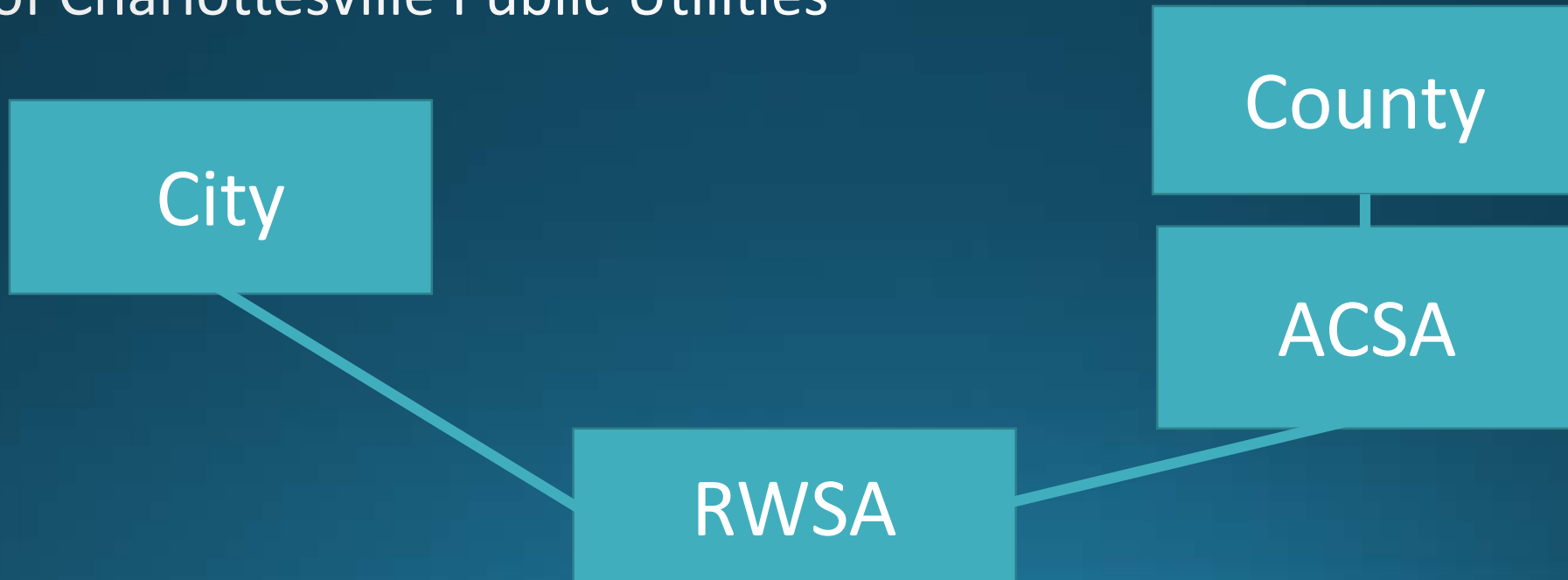
June 19, 2018

# Rivanna Water and Sewer Authority Charter

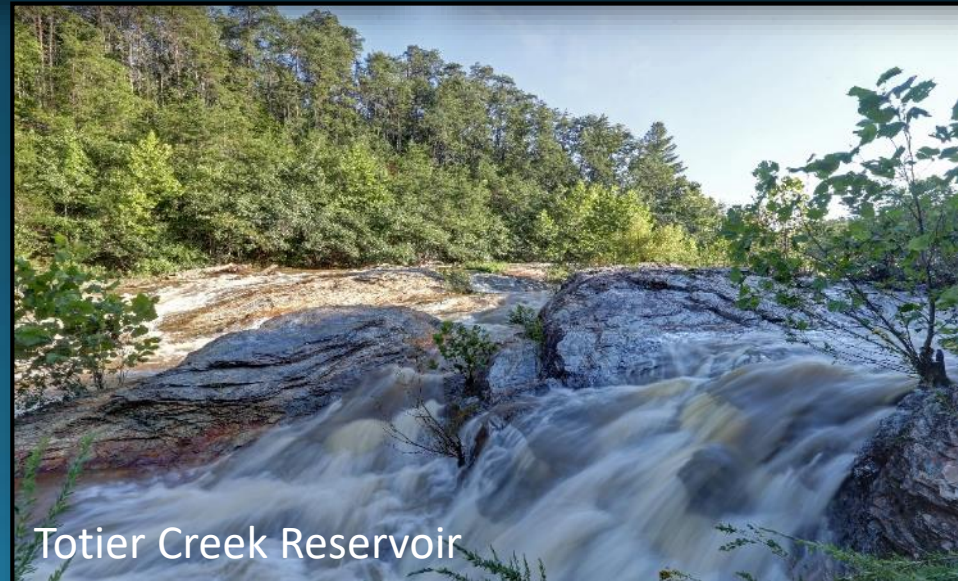
- Created in 1973 by joint action of Albemarle County Board of Supervisors and Charlottesville City Council to acquire, finance, construct, operate, and maintain facilities to impound and treat drinking water and wastewater for the County and the City
- Under direction of a 7-member Board of Directors: 3 County, 3 City, 1 joint member

# RWSA provides Wholesale Drinking Water and Wastewater Treatment for Two Customers

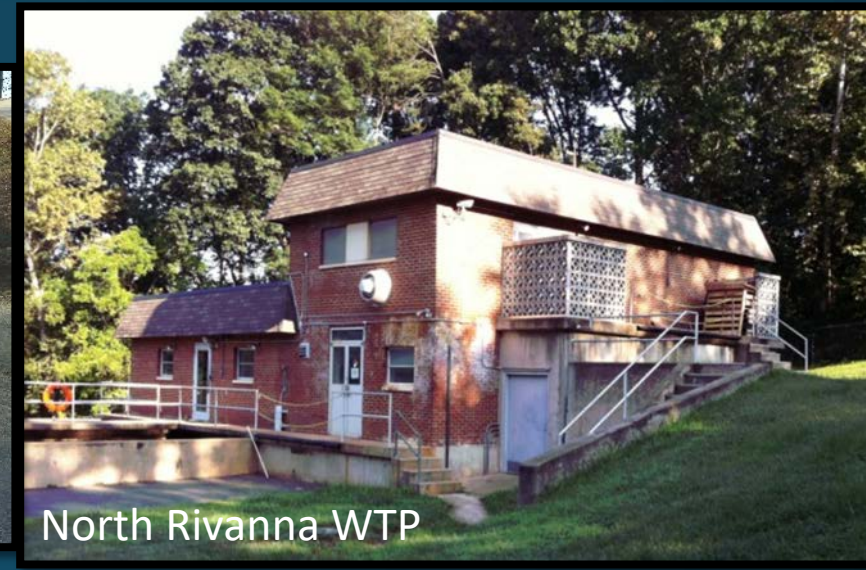
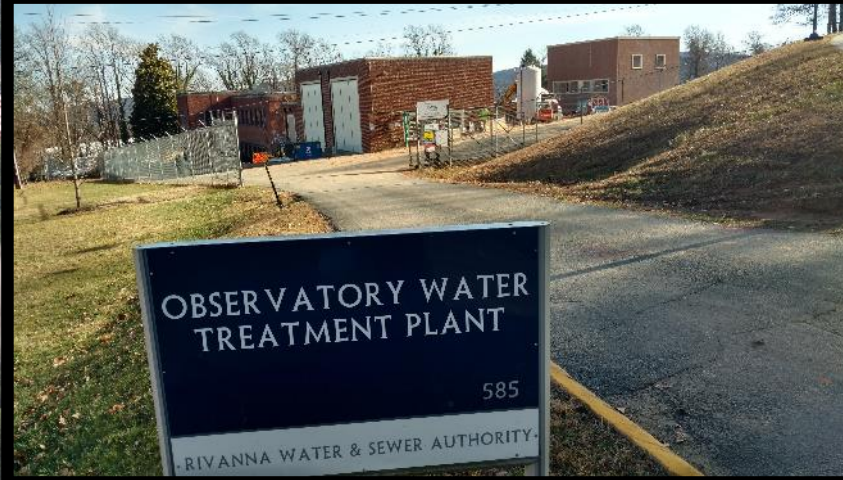
- Albemarle County Service Authority (ACSA)
- City of Charlottesville Public Utilities



# Drinking Water Reservoirs



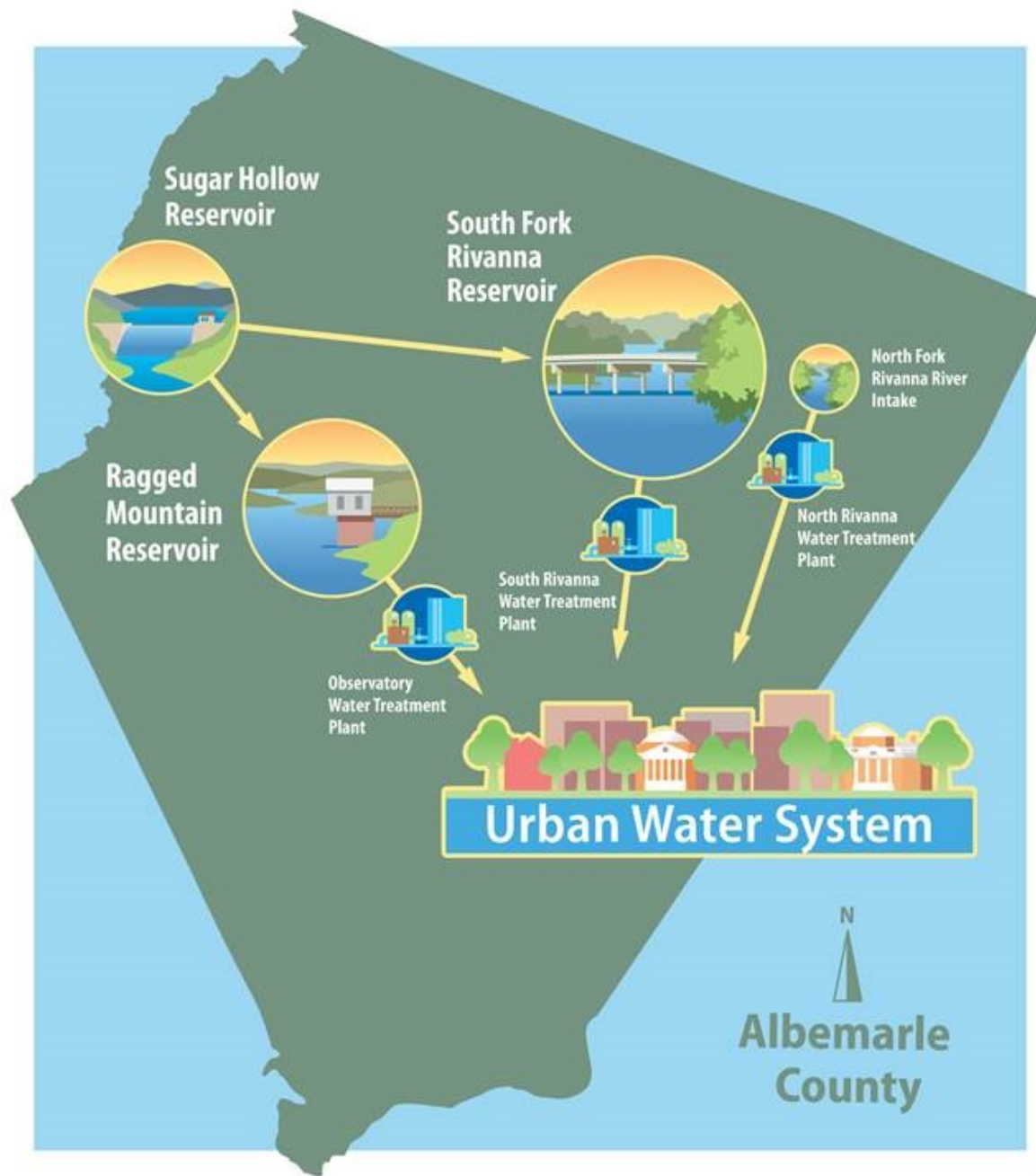
# Water Treatment Plants



# Wastewater Treatment Facilities

- Moore's Creek Advanced Water Resource Recovery Facility (pictured)
- Scottsville
- Glenmore
- Stone Robinson Elementary School



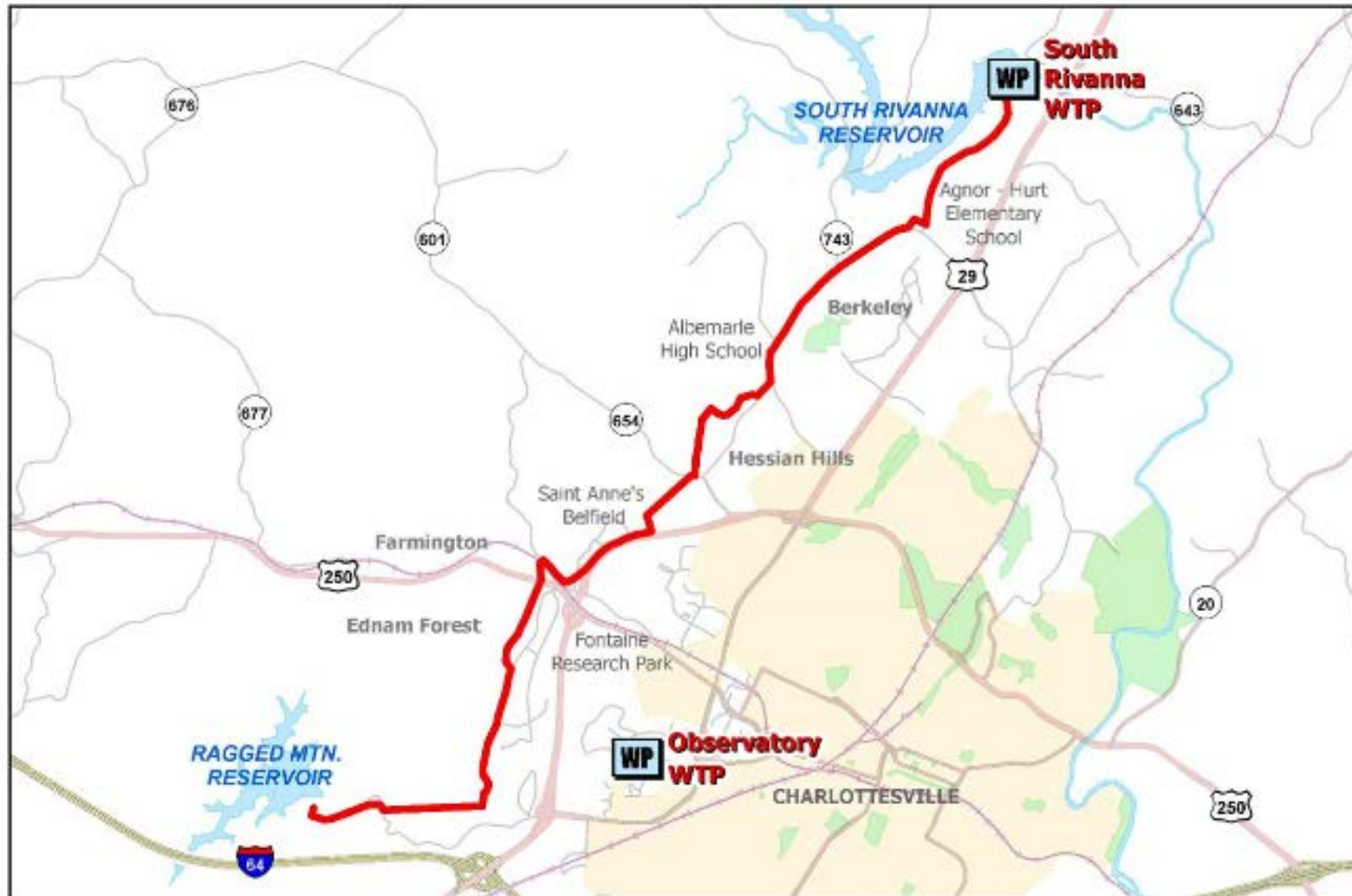


# Community Water Supply Plan Overview

- Charlottesville/Albemarle experienced a historical drought from June 2001 – Nov. 2002. Mandatory water restrictions were implemented. Planning began to increase the community's water supply.
- The Ragged Mountain Dam Project Agreement was completed in 2012 between the City, ACSA, and RWSA. It includes:
  - An earthen dam at the Ragged Mountain Reservoir (RMR); Completed 2014
  - A Water Line from South Rivanna Reservoir (SRR) – Ragged Mountain Reservoir (RMR)
  - Modifications to raise the RMR water level an additional 12 feet when community water demand equals 85% of the available water capacity.



# Project Location



**Potential Ragged Mtn. Reservoir to South Rivanna WTP Pipeline**



Miles  
0 0.25 0.5



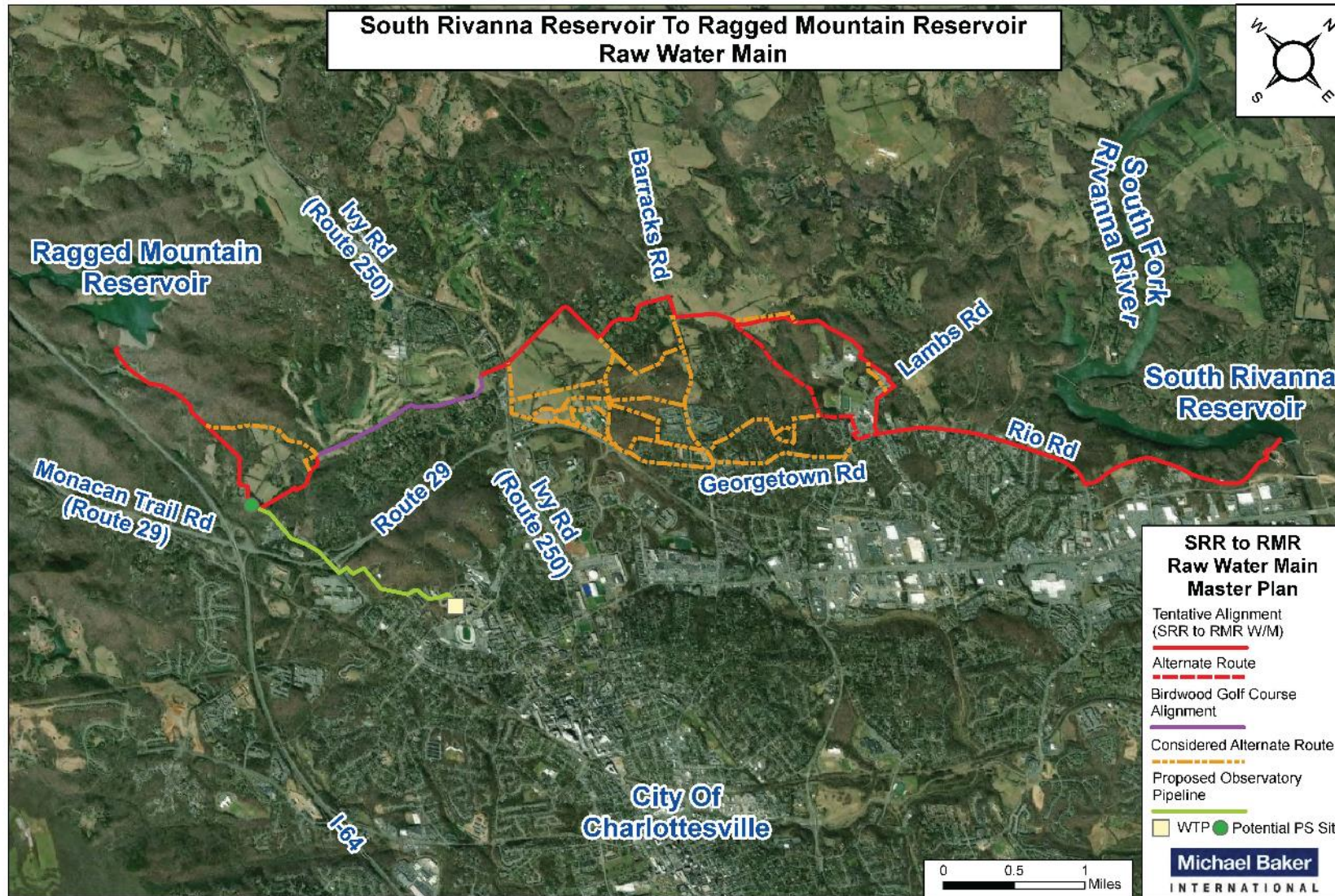
695 Noonan Creek Lane  
Charlottesville, VA 22902  
p.434-977-2970  
[www.rivanna.org](http://www.rivanna.org)  
[www.rivannagis.org](http://www.rivannagis.org)

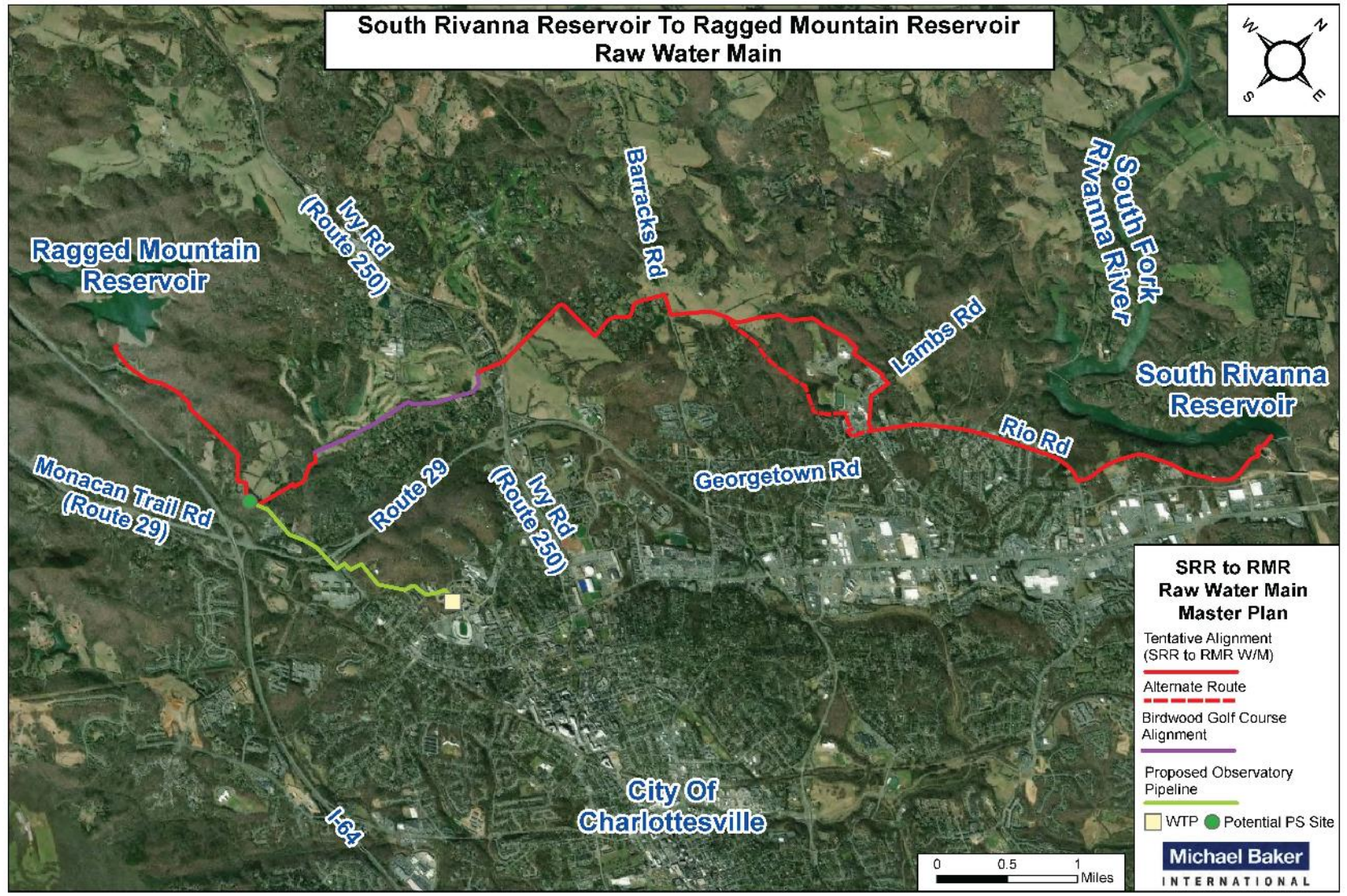
Data used in this map was provided by the RWSA, City of Charlottesville, Albemarle Co. GIS, and the UVA FM Dept. Duplication of data or redistribution of this map without permission from the RWSA Engineering Dept. is prohibited.

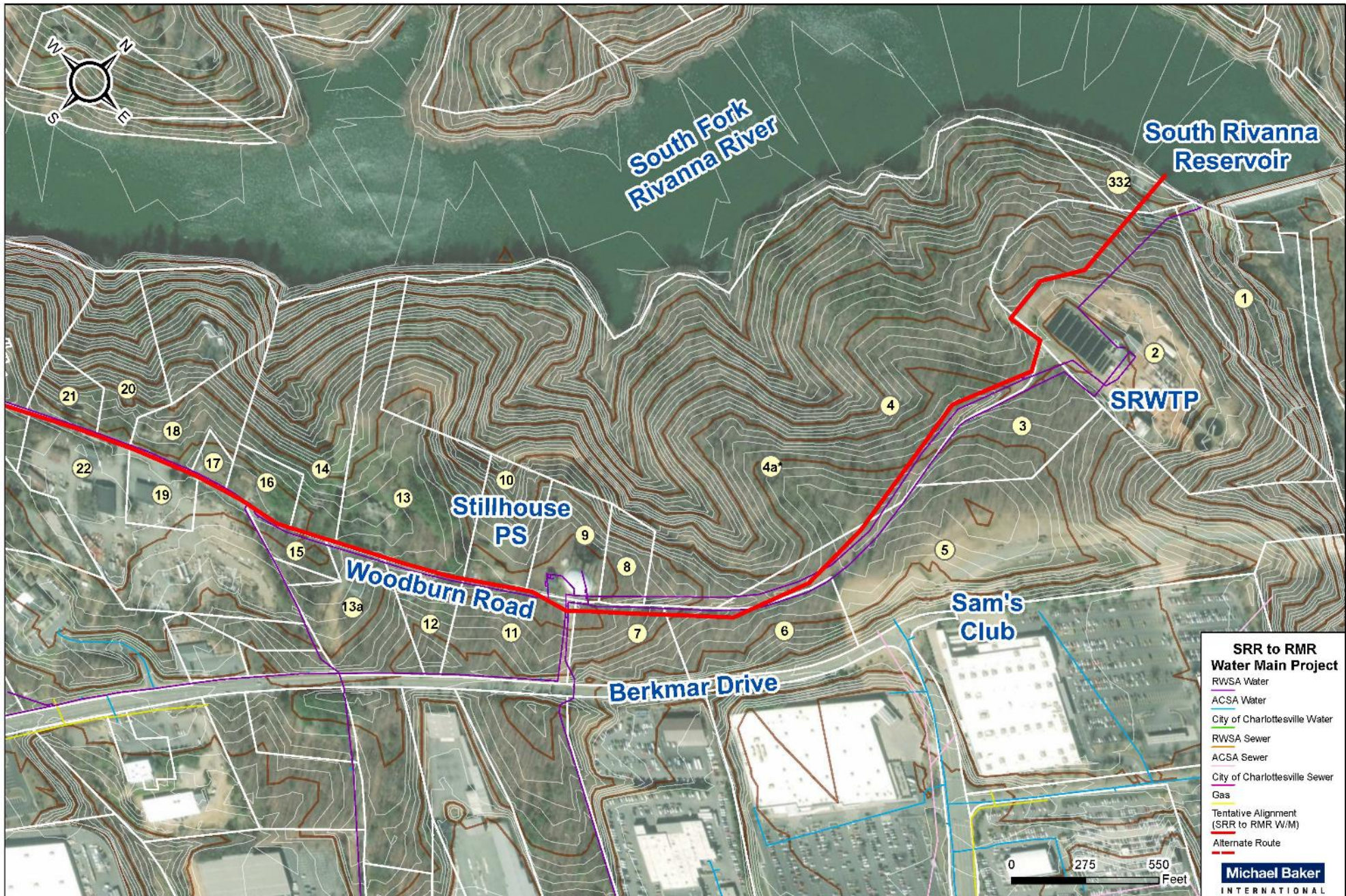
Date: 4/4/2017

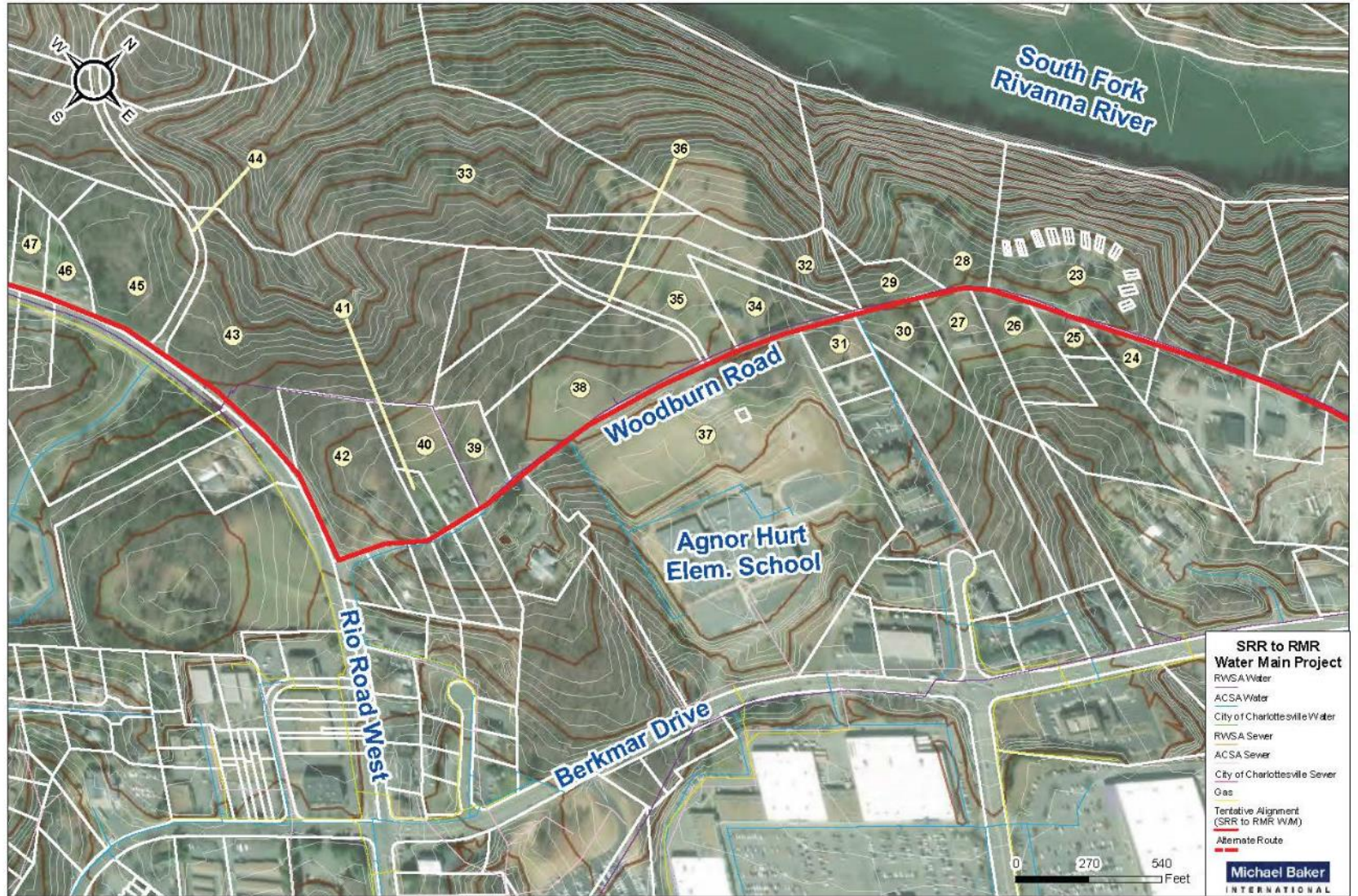
# Project Details

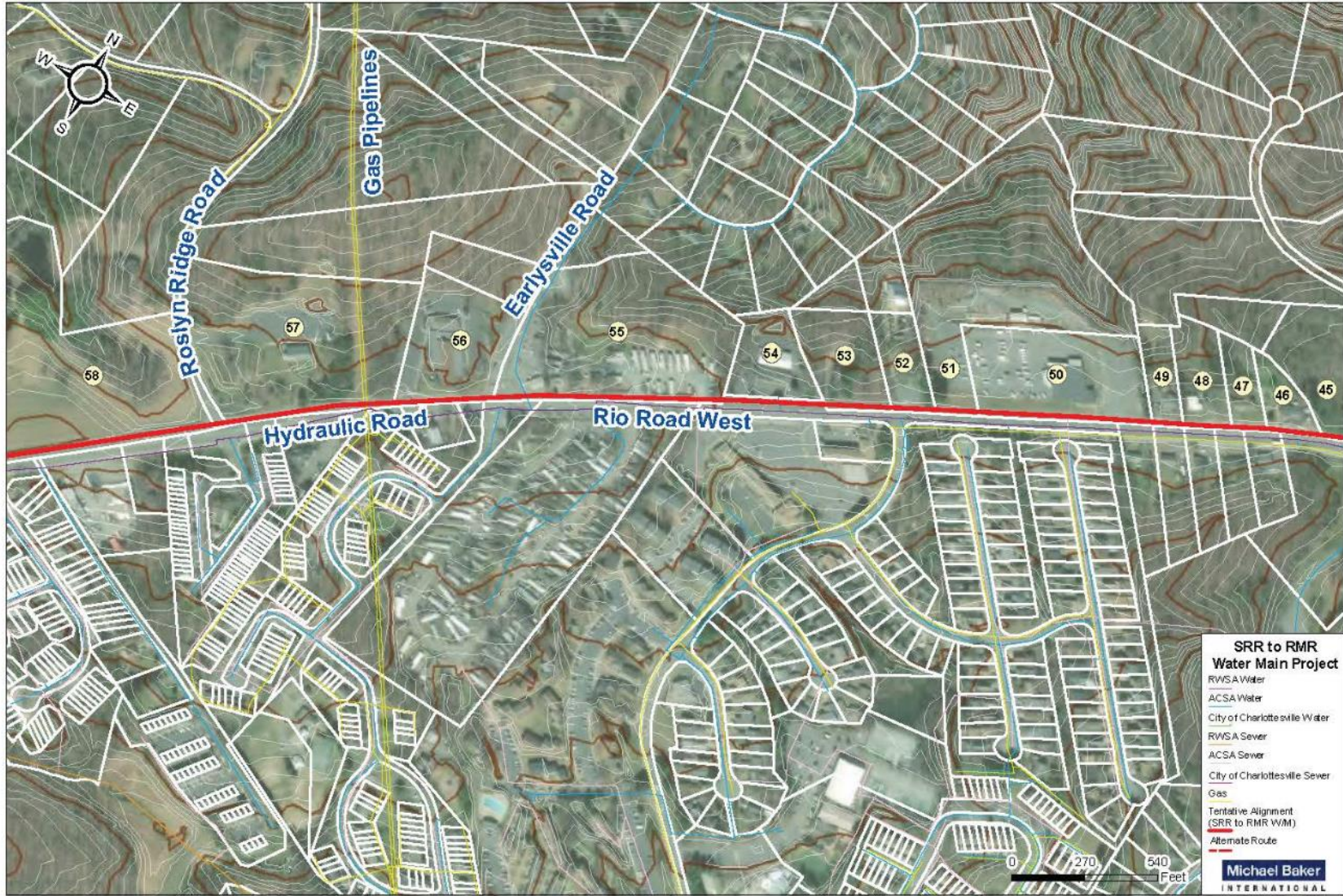
- 36 inch raw water line, 9 miles long, 25 MGD capacity
- Intake structure in the South Rivanna Reservoir
- 1 raw water pump station
- Pretreatment Facility at the South Rivanna Water Treatment Plant
- Close Sugar Hollow Reservoir water line





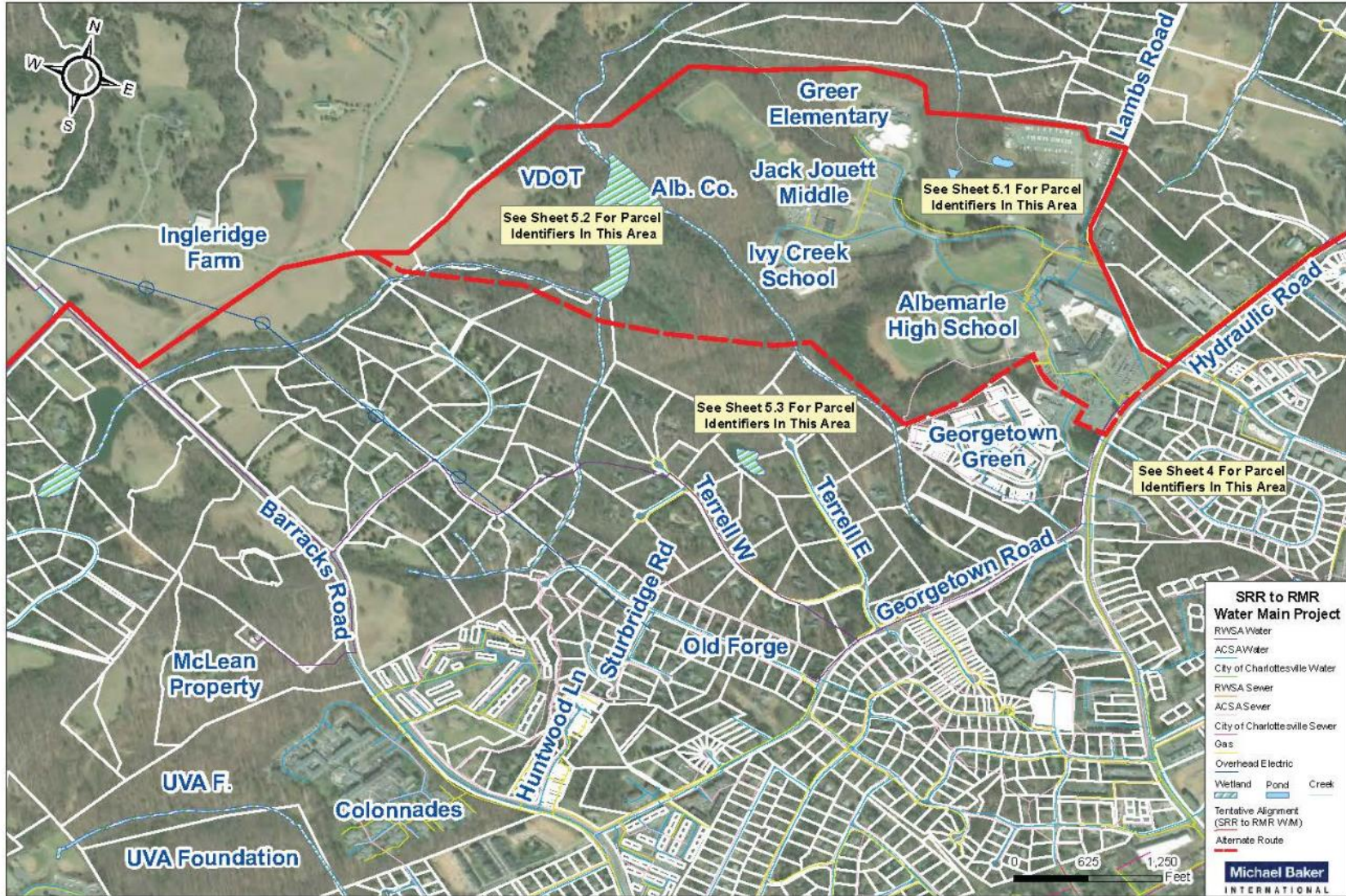


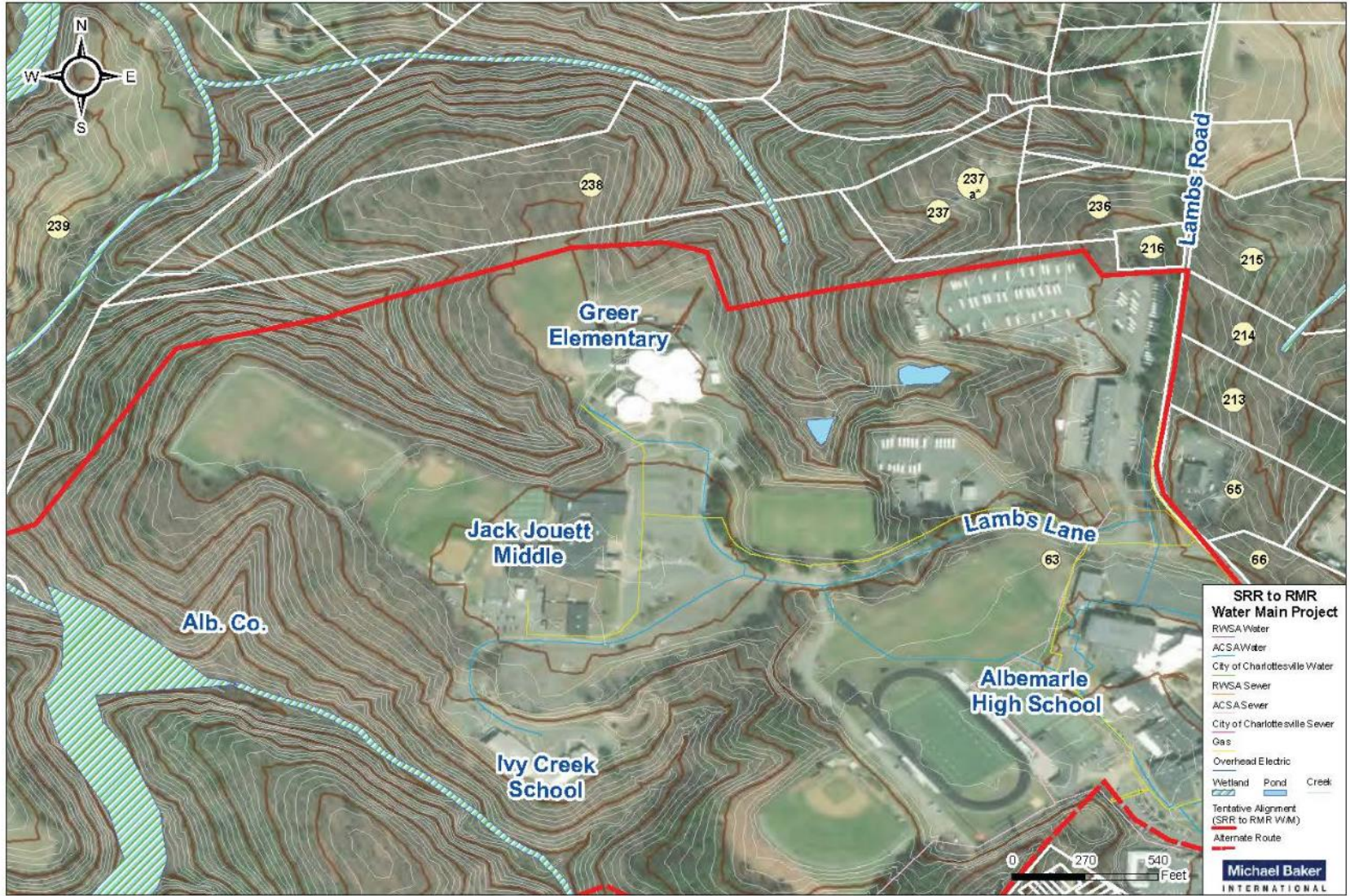




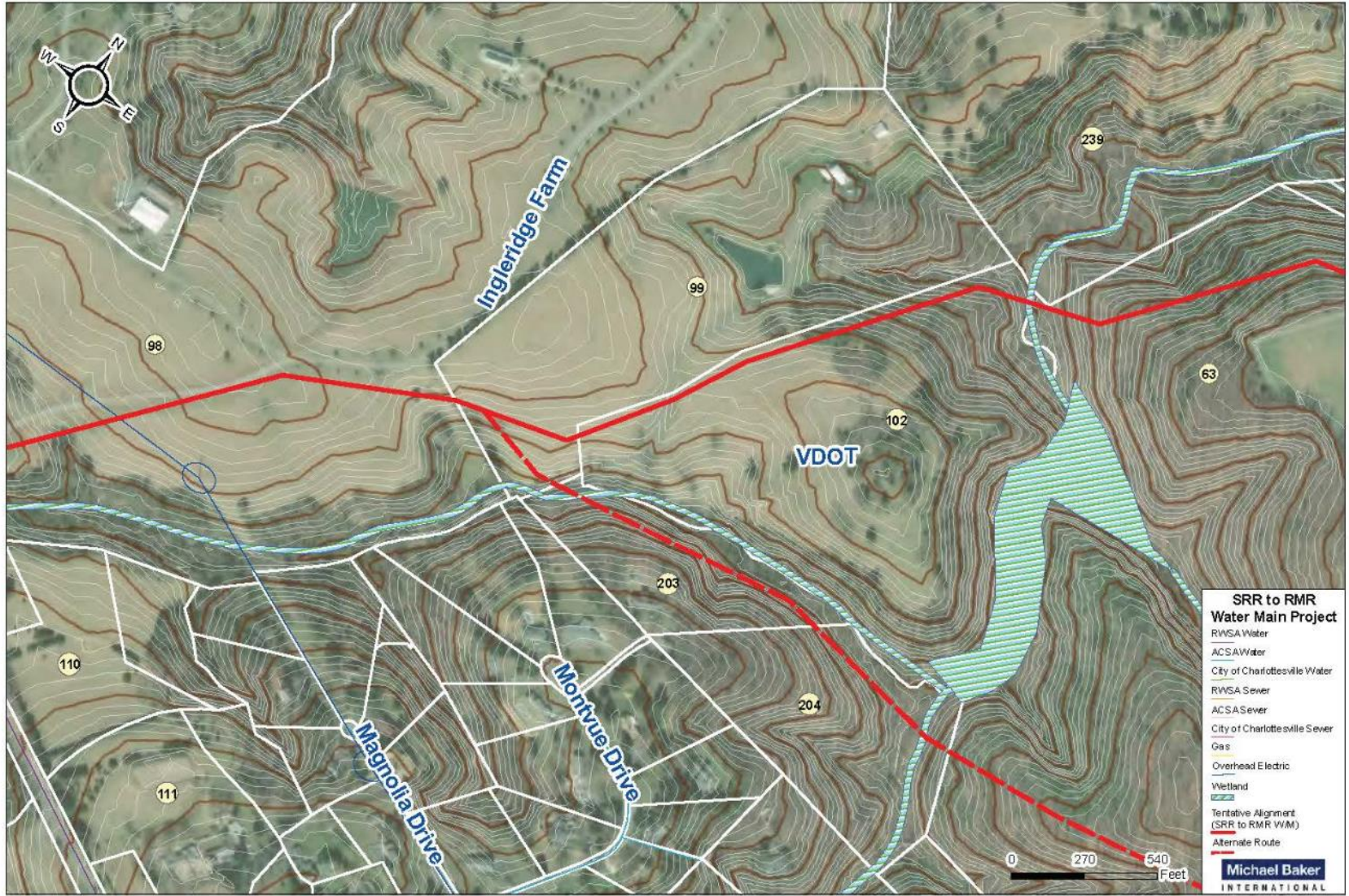








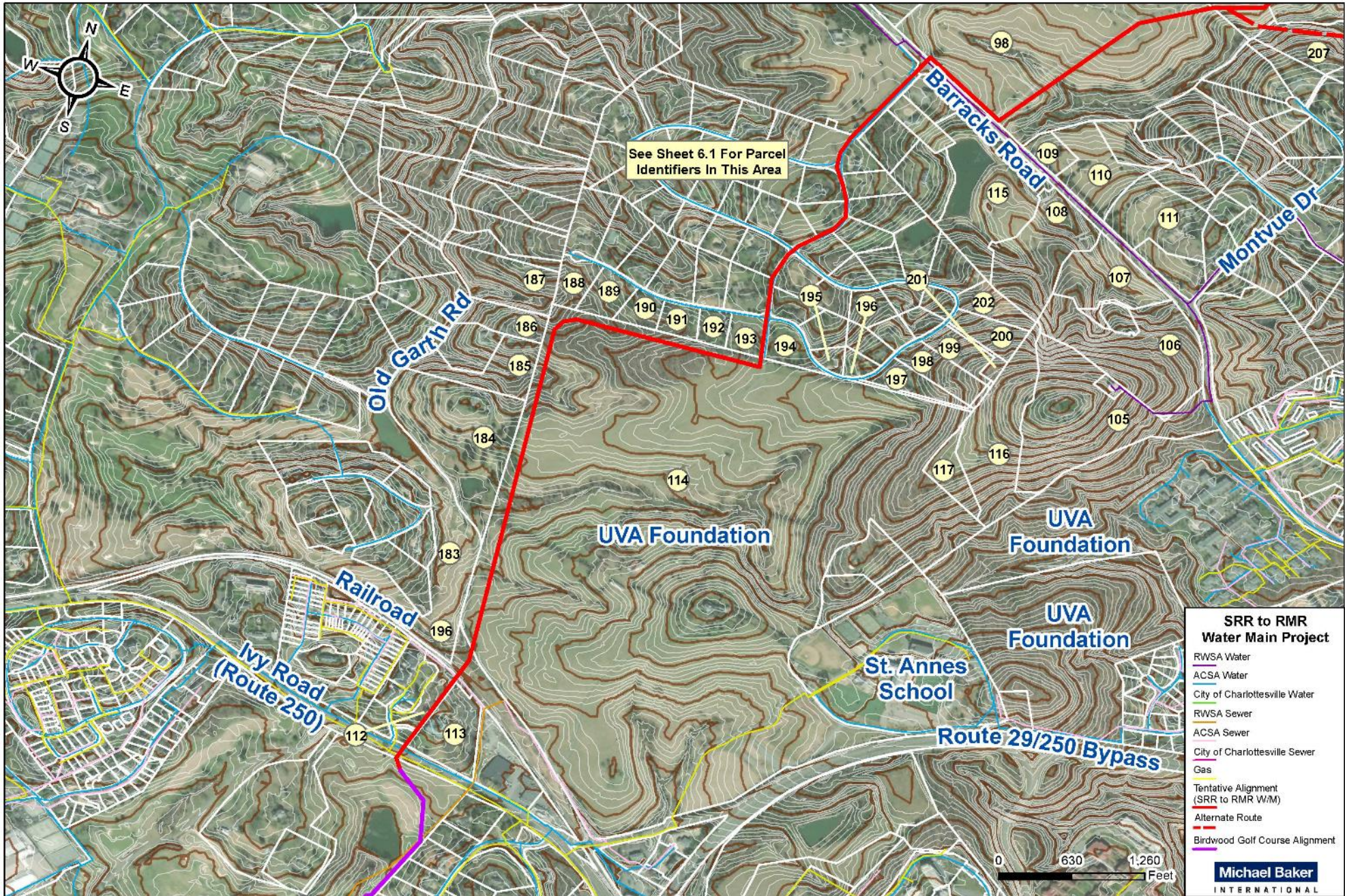
Sheet 5.1 of 10



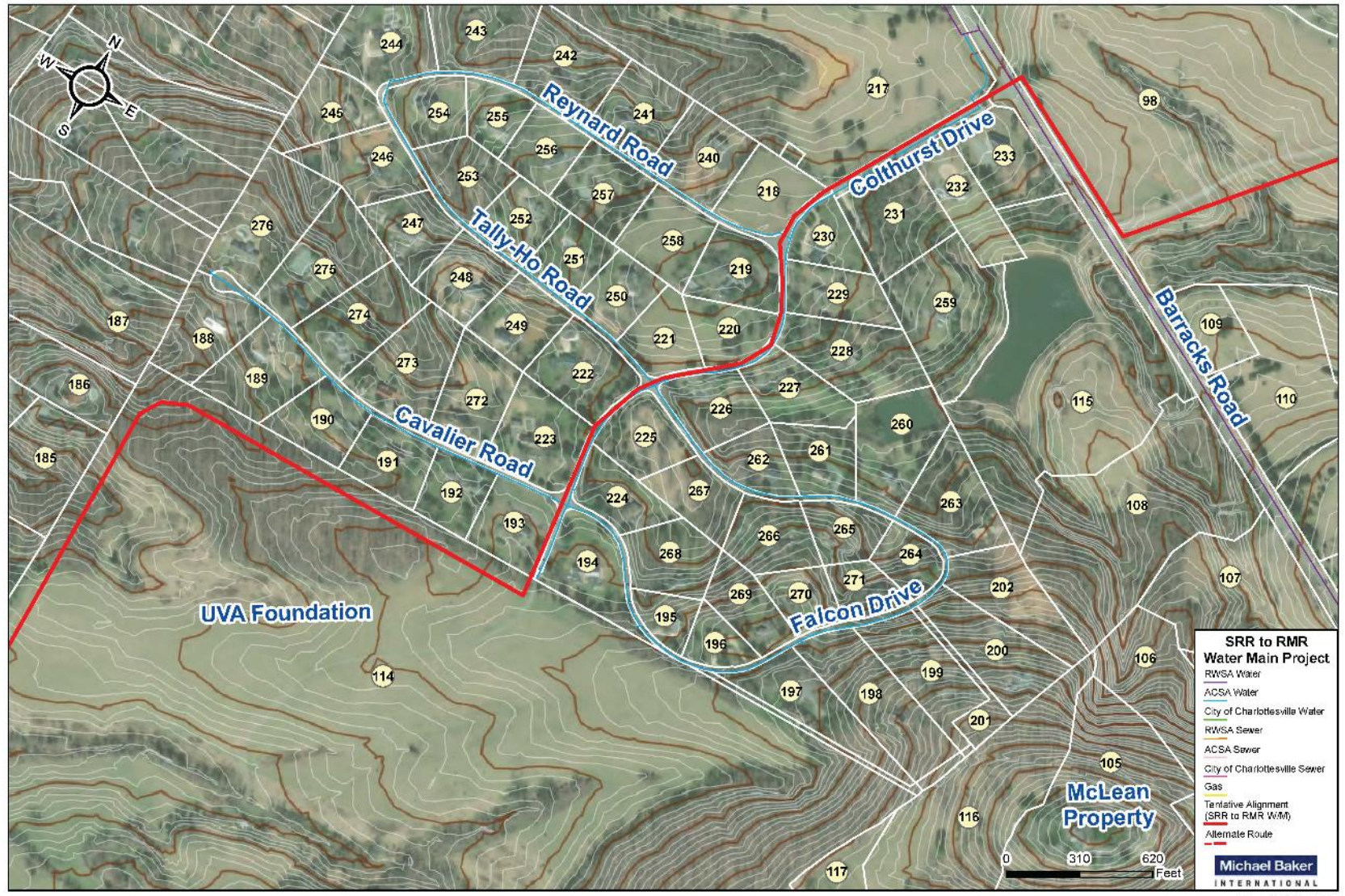
Sheet 5.2 of 10



Sheet 5.3 of 10



See Sheet 6.1 For Parcel Identifiers In This Area



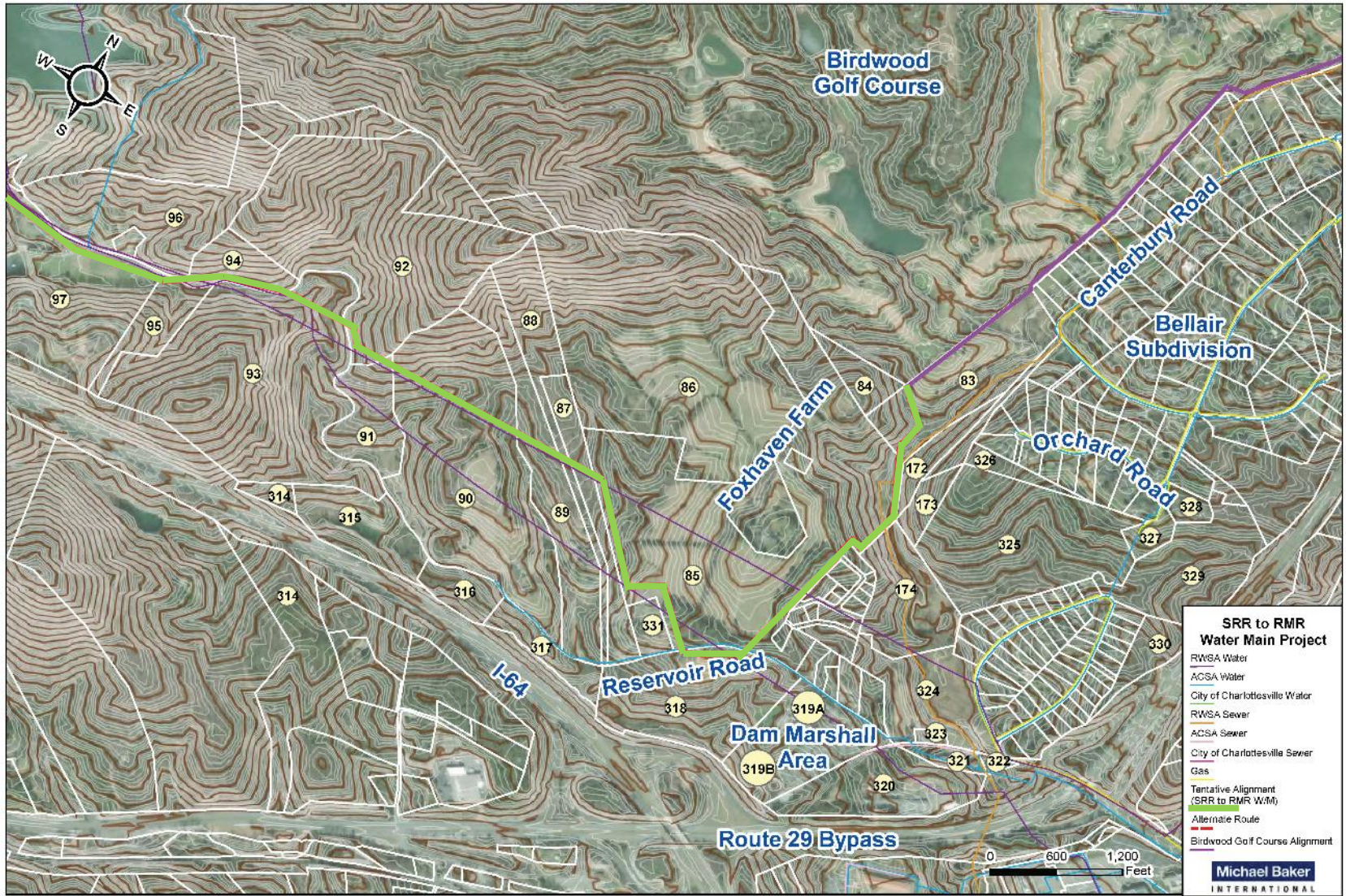
Sheet 6.1 of 10



Sheet 7 of 10







Sheet 9 of 10



Sheet 10 of 10

# Budget & Schedule

- SRR – RMR Water Line, Intake, PS, Pretreatment      \$80 M
- 8 years for project completion
  - To begin between 2027 and 2032, with completion between 2035 and 2040

# Questions?



# Project Contacts

- RWSA Project Staff: 434-977-2970
  - Tom Freeman – Project Engineer
    - [tfreeman@rivanna.org](mailto:tfreeman@rivanna.org)
  - Scott Schiller – Engineering Manager
    - [sschiller@rivanna.org](mailto:sschiller@rivanna.org)
  - Jennifer Whitaker – Director of Engineering & Maintenance
    - [jwhitaker@rivanna.org](mailto:jwhitaker@rivanna.org)
  - Bill Mawyer – Executive Director
    - [bmawyer@rivanna.org](mailto:bmawyer@rivanna.org)